

SV.5023-1300 - 3D VIEW

DRAWING INDEX	
DRAWING No.	DRAWING TITLE
SP21-CT24610-C	COVER SHEET AND DRAWING INDEX
SP21-CT24620-C	GENERAL NOTES PAGE
SP21-CT24630-C	GENERAL ARRANGEMENT
SP21-CT24640-C	PERMISSIBLE PENETRATIONS, SHEETS 1,2 & 3
SP21-CT24650-C	TANK LID PENETRATION OPTIONS
SP21-CT48180-C	GENERAL LIFTING ARRANGEMENT

1	08/04/21	G.T	INITIAL RELEASE	
2	11/21	G.T	GENERAL REVISION	
REV	DATE	BY	DESCRIPTION	CHK

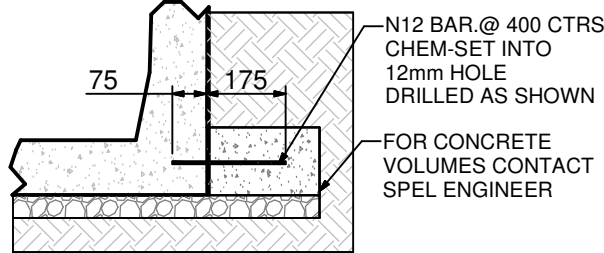
CONFIDENTIAL - The drawings must not be disclosed to any third parties without written permission from SPEL STORMWATER .
Unauthorised disclosure may result in prosecution.
© SPEL STORMWATER - This drawing is the property of SPEL STORMWATER ABN: 83 151 832 629 and is subject to return on demand. It is submitted for the use only in connection with the proposal and contracts of SPEL STORMWATER with the expressed conditions that it is not to be reproduced or copied in any form. This data must only be used in accordance with our standard terms and conditions.
© Copyright
SPEL STORMWATER accepts no responsibility for any loss or damage resulting from any person acting on this information. The details and dimensions contained in this document may change, please check with SPEL STORMWATER for confirmation of current specifications.

Drawn	Date
G.T	9/04/2021
Check	Date
Verified	Date
Approved	Date
Request No.	




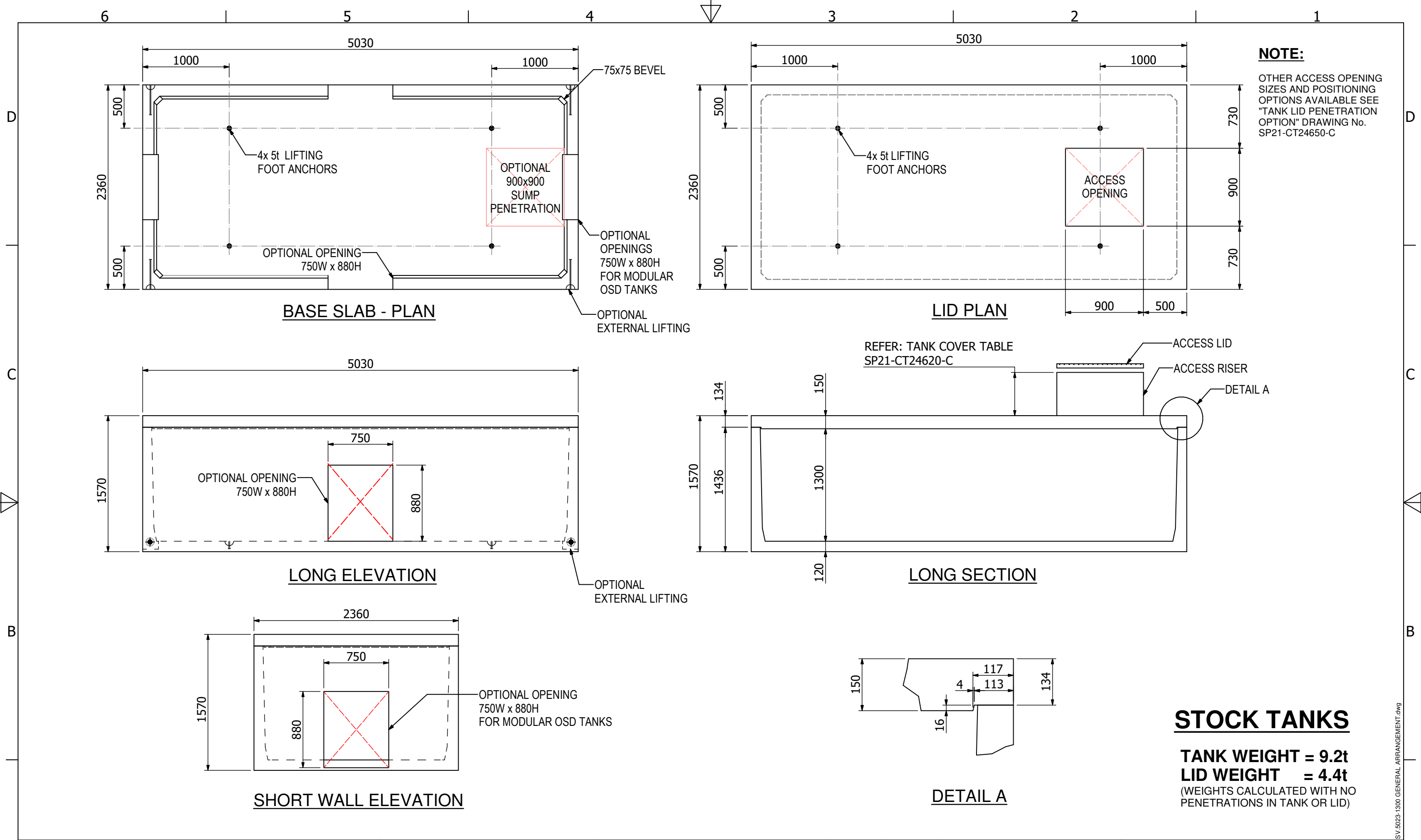
PROJECT :			
TITLE COVER SHEET AND DRAWING INDEX 13.18 kL SPEL PRECAST CONCRETE TANK SV.5023-1300			
SCALE N.T.S	SIZE A3	SHEET 1	REV 2
CUSTOMER CODE :		DWG No. SP21-CT24610-C	

SV.5023-1300 COVER PAGE.dwg



1. TOTAL APPROVED 15.0 t (WLL) LIMIT AS SPECIFIED ON DRAWING. CONSULT AN RPEQ ENGINEER FOR LIFTING DESIGN OF SPECIFICALLY DESIGNED TANKS WITH ADDITIONAL FIXTURES INSTALLED AND TOTAL WEIGHT EXCEEDING APPROVED 15.0 t
2. THE ERECTOR SHALL COORDINATE WITH THE SITE PROJECT ENGINEER FOR SITE ACCESS, GROUND CONDITIONS AND PLANNED LIFTING EQUIPMENT PRIOR TO TANK DELIVERY ON SITE.
3. RIGGING ARRANGEMENT SHALL ENSURE THE LOAD IS EVENLY DISTURBED BETWEEN ALL LIFTING ANCHORS.
4. ONLY USE LIFTING PINS PROVIDED WHEN LIFTING, DAMAGED LIFTING PINS SHALL NOT BE USED UNLESS CAPACITY IS VERIFIED AND APPROVED BY A RPEQ ENGINEER.

					<p>CONFIDENTIAL - The drawings must not be disclosed to any third parties without written permission from SPEL STORMWATER . Unauthorised disclosure may result in prosecution. © SPEL STORMWATER - This drawing is the property of SPEL STORMWATER ABN: 83 151 832 629 and is subject to return on demand. It is submitted for the use only in connection with the proposal and contracts of SPEL STORMWATER with the expressed conditions that it is not to be reproduced or copied in any form. This data must only be used in accordance with our standard terms and conditions. © Copyright SPEL STORMWATER accepts no responsibility for any loss or damage resulting from any person acting on this information. The details and dimensions contained in this document may change, please check with SPEL STORMWATER for confirmation of current specifications.</p>	Drawn GT	Date 7/04/2021	 spelstormwater joy in water spel.com.au	PROJECT :			
						Check	Date		TITLE GENERAL NOTES 13.18 kL SPEL PRECAST CONCRETE TANK SV.5023-1300			
						Verified	Date					
						Approved	Date					
						Request No.						
1	04/21	G.T.	INITIAL RELEASE									
2	10/21	GT	GENERAL AMENDMENTS									
REV	DATE	BY	DESCRIPTION	CHK								



STOCK TANKS

TANK WEIGHT = 9.2t
LID WEIGHT = 4.4t

(WEIGHTS CALCULATED WITH NO PENETRATIONS IN TANK OR LID)

A

1	05/21	G.T	INITIAL RELEASE	
2	10/21	GT	GENERAL AMENDMENTS	
REV	DATE	BY	DESCRIPTION	CHK

6

5

CLIENT:

CONFIDENTIAL - The drawings must not be disclosed to any third parties without written permission from SPEL STORMWATER .
Unauthorised disclosure may result in prosecution.
© SPEL STORMWATER - This drawing is the property of SPEL STORMWATER ABN: 83 151 832 629 and is subject to return on demand. It is submitted for the use only in connection with the proposal and contracts of SPEL STORMWATER with the expressed conditions that it is not to be reproduced or copied in any form. This data must only be used in accordance with our standard terms and conditions.
© Copyright
SPEL STORMWATER accepts no responsibility for any loss or damage resulting from any person acting on this information. The details and dimensions contained in this document may change, please check with SPEL STORMWATER for confirmation of current specifications.

4

3

Drawn

GT

Check

Verified

Approved

Request No.


Date

8/04/2021

Date

Date

Date



spelstormwater

joy in water

spel.com.au

2

PROJECT :

TITLE

GENERAL ARRANGEMENT
13.18 kL SPEL PRECAST CONCRETE TANK
SV.5023-1300

SCALE

N.T.S

SIZE

A3

SHEET

1

REV

2

CUSTOMER CODE :

DWG No.

SP21-CT24630-C

A

1

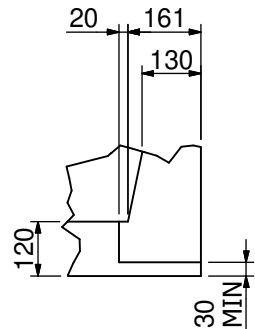
STOCK TANKS

PLEASE NOTE:

THESE GUIDELINES ARE FOR A STOCK TANK WITH STANDARD REINFORCEMENT.

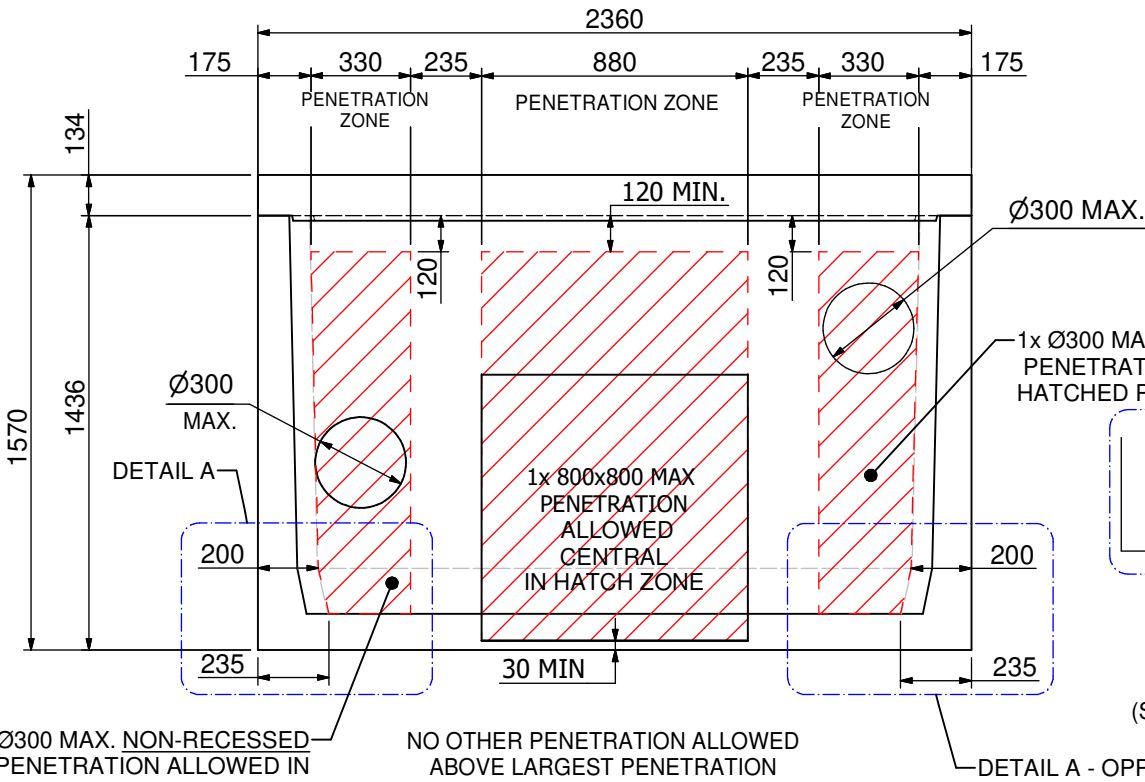
IF REQUIRED PENETRATIONS ARE OUTSIDE OF THE GUIDELINES SHOWN, CONTACT SPEL WHO WILL SEEK FURTHER ENGINEERING ADVICE.

CUSTOM TANKS CAN PROVIDE PENETRATIONS OUTSIDE THESE GUIDELINES REFER.
"PERMISSIBLE PENETRATIONS - CUSTOM TANKS"
ON DRAWINGS SP21-CT24640-C SHEET 2 & 3
FOR A GUIDE PRIOR TO TANK PRODUCTION.

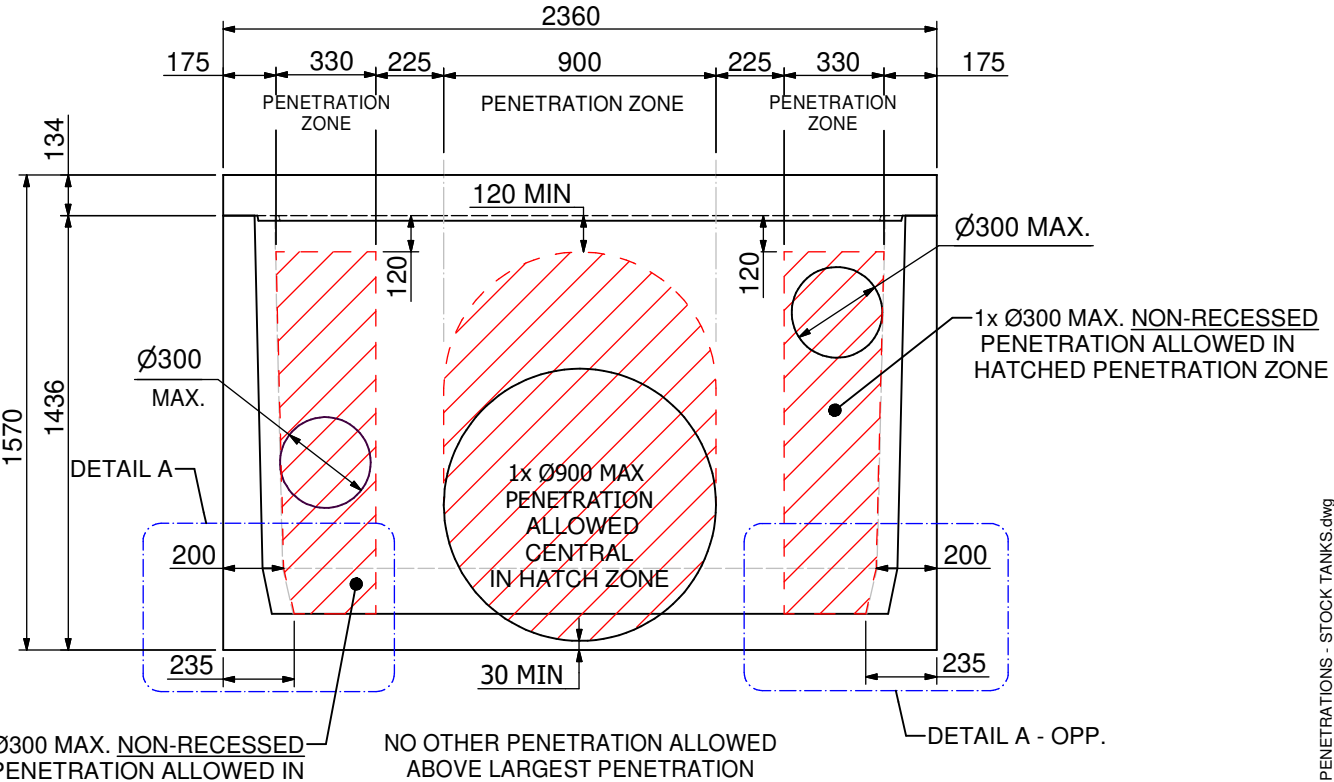


TYPICAL BASE
RECESS DETAIL

LONG WALL - SINGLE LARGEST PERMISSIBLE PENETRATION



SHORT WALL - 880x880 MAX. PENETRATION



SHORT WALL - Ø 900 MAX PENETRATION

1	07/21	G.T	INITIAL RELEASE	
2	10/21	GT	DRAWING SET EXPANDED	
REV	DATE	BY	DESCRIPTION	CHK

CONFIDENTIAL - The drawings must not be disclosed to any third parties without written permission from SPEL STORMWATER. Unauthorised disclosure may result in prosecution.
© SPEL STORMWATER - This drawing is the property of SPEL STORMWATER ABN: 83 151 832 629 and is subject to return on demand. It is submitted for the use only in connection with the proposal and contracts of SPEL STORMWATER with the expressed conditions that it is not to be reproduced or copied in any form. This data must only be used in accordance with our standard terms and conditions.
© Copyright
SPEL STORMWATER accepts no responsibility for any loss or damage resulting from any person acting on this information. The details and dimensions contained in this document may change, please check with SPEL STORMWATER for confirmation of current specifications.

Drawn	Date
GT	7/04/2021
Check	Date
Verified	Date
Approved	Date
Request No.	



PROJECT :			
TITLE PERMISSIBLE PENETRATIONS 13.18 KL SPEL PRECAST CONCRETE TANK SV.5023-1300- STOCK TANKS			
SCALE N.T.S	SIZE A3	SHEET 1	REV 2
CUSTOMER CODE : DWG No.		SP21-CT24640-C	

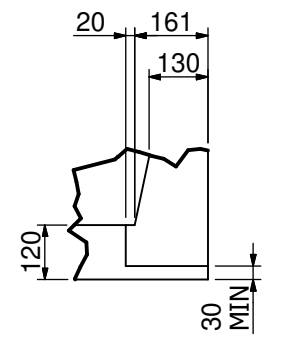
CUSTOM TANKS

IMPORTANT NOTE:

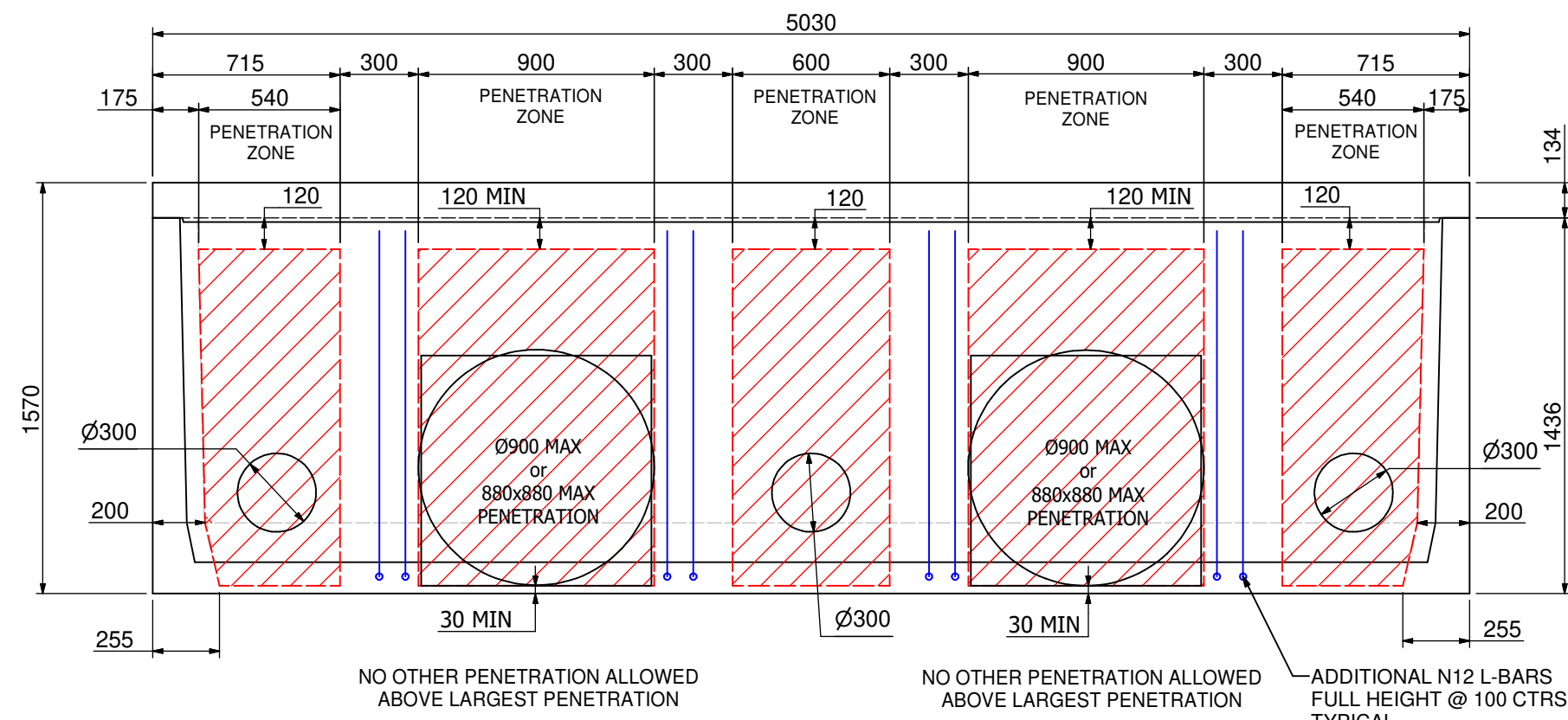
THESE PENETRATIONS CANNOT BE PERFORMED TO A STANDARD TANK.

THEY ARE REQUIRED TO BE ARRANGED WITH SPEL, PRIOR TO POURING THE TANK SO ADDITIONAL REINFORCEMENT CAN BE INCLUDED.

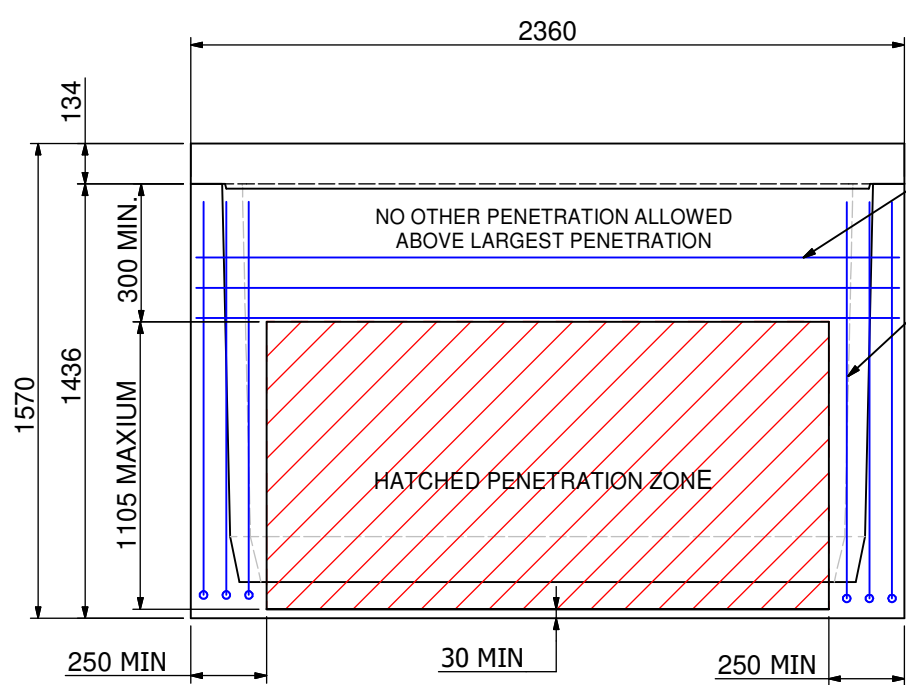
FOR STANDARD PERMISSIBLE PENETRATION REFER DRAWING SP21-CT24640-C SHEET 1 FOR ADDITIONAL PENETRATION COMBINATIONS CONTACT SPEL FOR DESIGN / ENGINEERING ASSISTANCE.



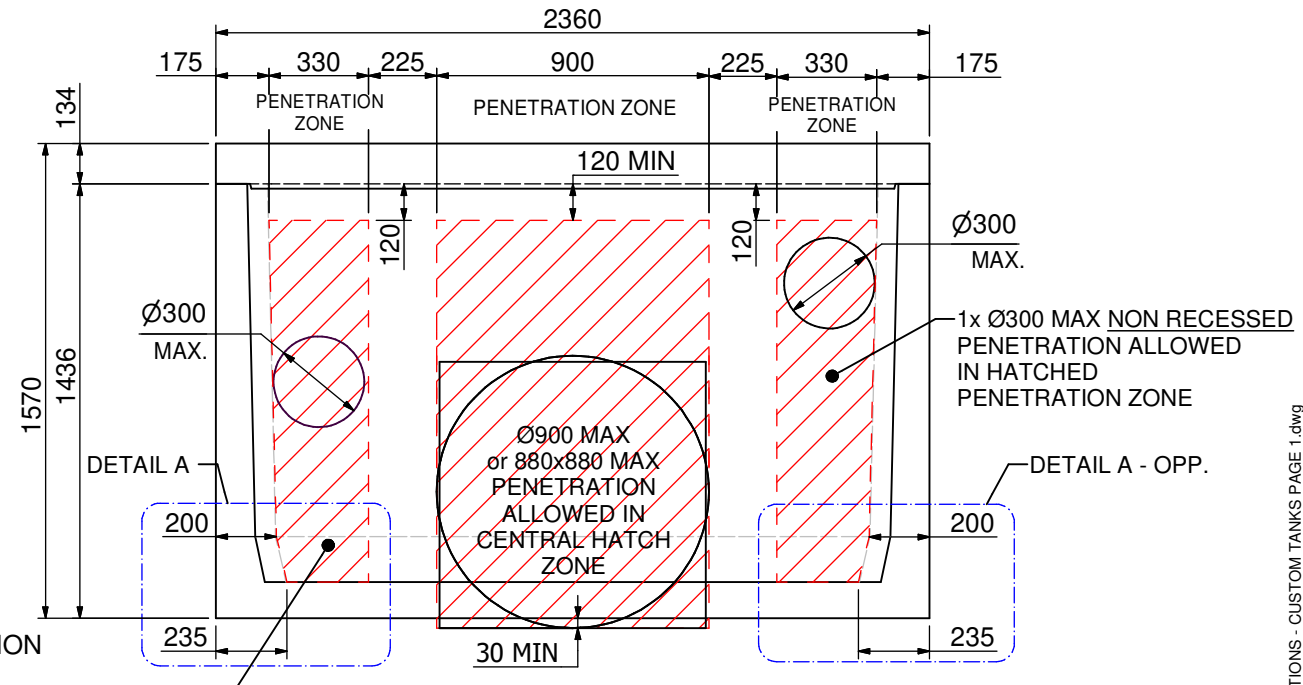
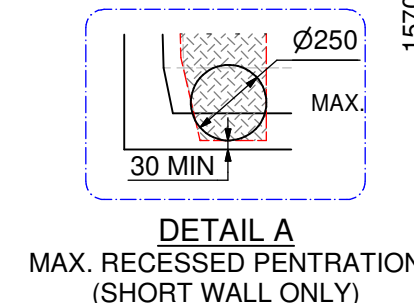
TYPICAL BASE RECESS DETAIL



LONG WALL - 2x LARGEST PERMISSIBLE PENETRATIONS



SHORT WALL - MAX. CUSTOM PENETRATION



SHORT WALL - Ø 900 MAX PENETRATION

CONFIDENTIAL - The drawings must not be disclosed to any third parties without written permission from SPEL STORMWATER. Unauthorised disclosure may result in prosecution.

© SPEL STORMWATER - This drawing is the property of SPEL STORMWATER ABN: 83 151 832 629 and is subject to return on demand. It is submitted for the use only in connection with the proposal and contracts of SPEL STORMWATER with the expressed conditions that it is not to be reproduced or copied in any form. This data must only be used in accordance with our standard terms and conditions.

© Copyright SPEL STORMWATER accepts no responsibility for any loss or damage resulting from any person acting on this information. The details and dimensions contained in this document may change, please check with SPEL STORMWATER for confirmation of current specifications.

Drawn	Date
GT	7/04/2021
Check	Date
Verified	Date
Approved	Date
Request No.	



PROJECT :			
TITLE PERMISSIBLE PENETRATIONS 13.18 kL SPEL PRECAST CONCRETE TANK SV.5023-1300- CUSTOM TANKS			
SCALE N.T.S	SIZE A3	SHEET 2	REV 1
CUSTOMER CODE : DWG No.		SP21-CT24640-C	

1	10/11/2020	G.T	INITIAL RELEASE	
REV	DATE	BY	DESCRIPTION	CHK

SV.5023-1300 PENETRATIONS - CUSTOM TANKS PAGE 1.dwg

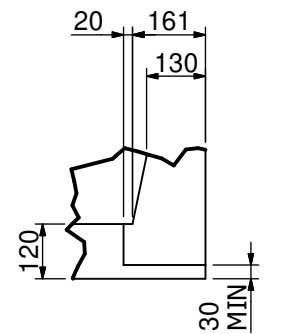
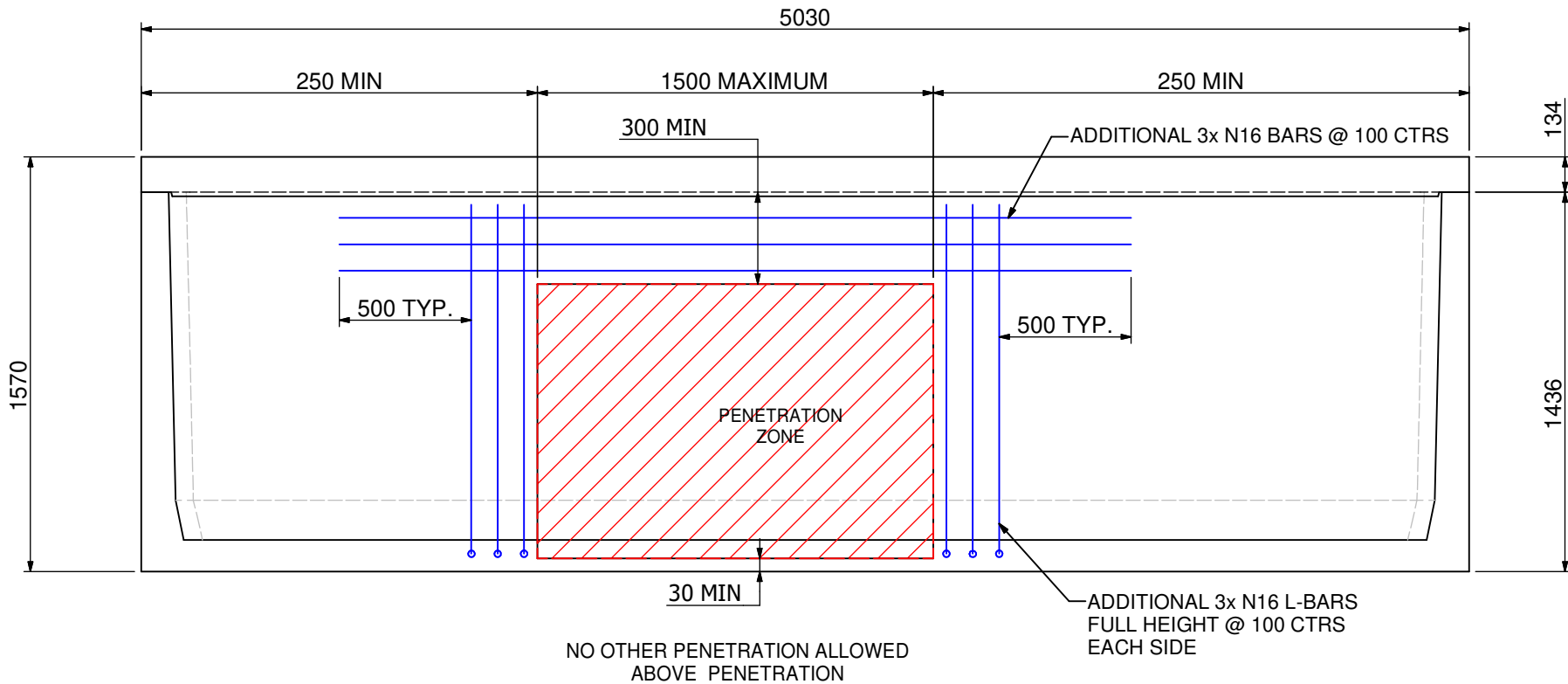
CUSTOM TANKS

IMPORTANT NOTE:

THESE PENETRATIONS CANNOT BE PERFORMED TO A STANDARD TANK.

THEY ARE REQUIRED TO BE ARRANGED WITH SPEL, PRIOR TO POURING THE TANK SO ADDITIONAL REINFORCEMENT CAN BE INCLUDED.

FOR STANDARD PERMISSIBLE PENETRATION REFER DRAWING SP21-CT24640-C SHEET 1 FOR ADDITIONAL PENETRATION COMBINATIONS CONTACT SPEL FOR DESIGN / ENGINEERING ASSISTANCE.



TYPICAL BASE RECESS DETAIL

LONG WALL - MAXIMUM SINGLE PENETRATION

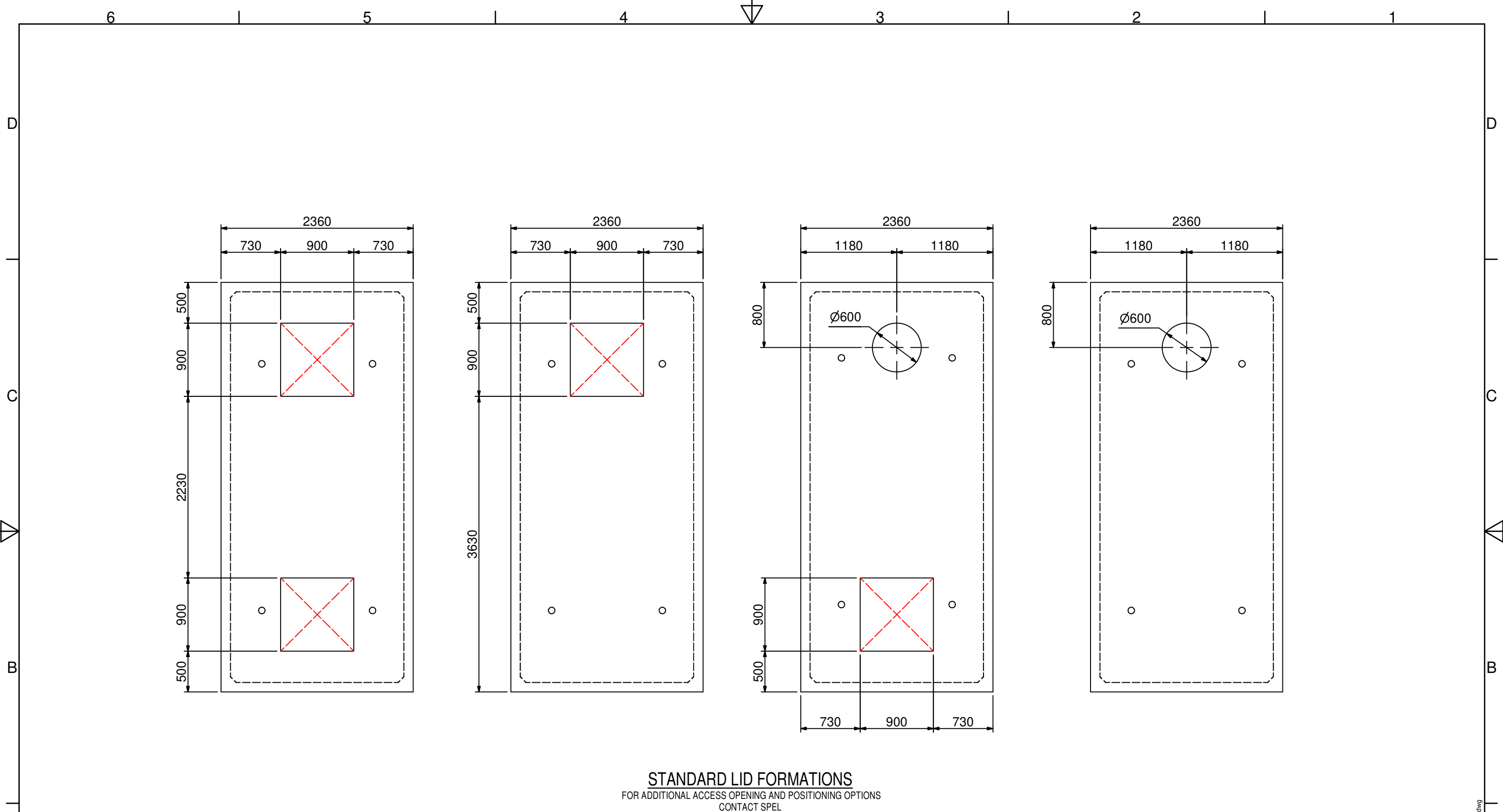
1	10/11/2020	G.T	INITIAL RELEASE	
REV	DATE	BY	DESCRIPTION	CHK

CONFIDENTIAL - The drawings must not be disclosed to any third parties without written permission from SPEL STORMWATER . Unauthorised disclosure may result in prosecution.
© SPEL STORMWATER - This drawing is the property of SPEL STORMWATER ABN: 83 151 832 629 and is subject to return on demand. It is submitted for the use only in connection with the proposal and contracts of SPEL STORMWATER with the expressed conditions that it is not to be reproduced or copied in any form. This data must only be used in accordance with our standard terms and conditions.
© Copyright
SPEL STORMWATER accepts no responsibility for any loss or damage resulting from any person acting on this information. The details and dimensions contained in this document may change, please check with SPEL STORMWATER for confirmation of current specifications.

Drawn GT	Date 7/04/2021
Check	Date
Verified	Date
Approved	Date
Request No.	

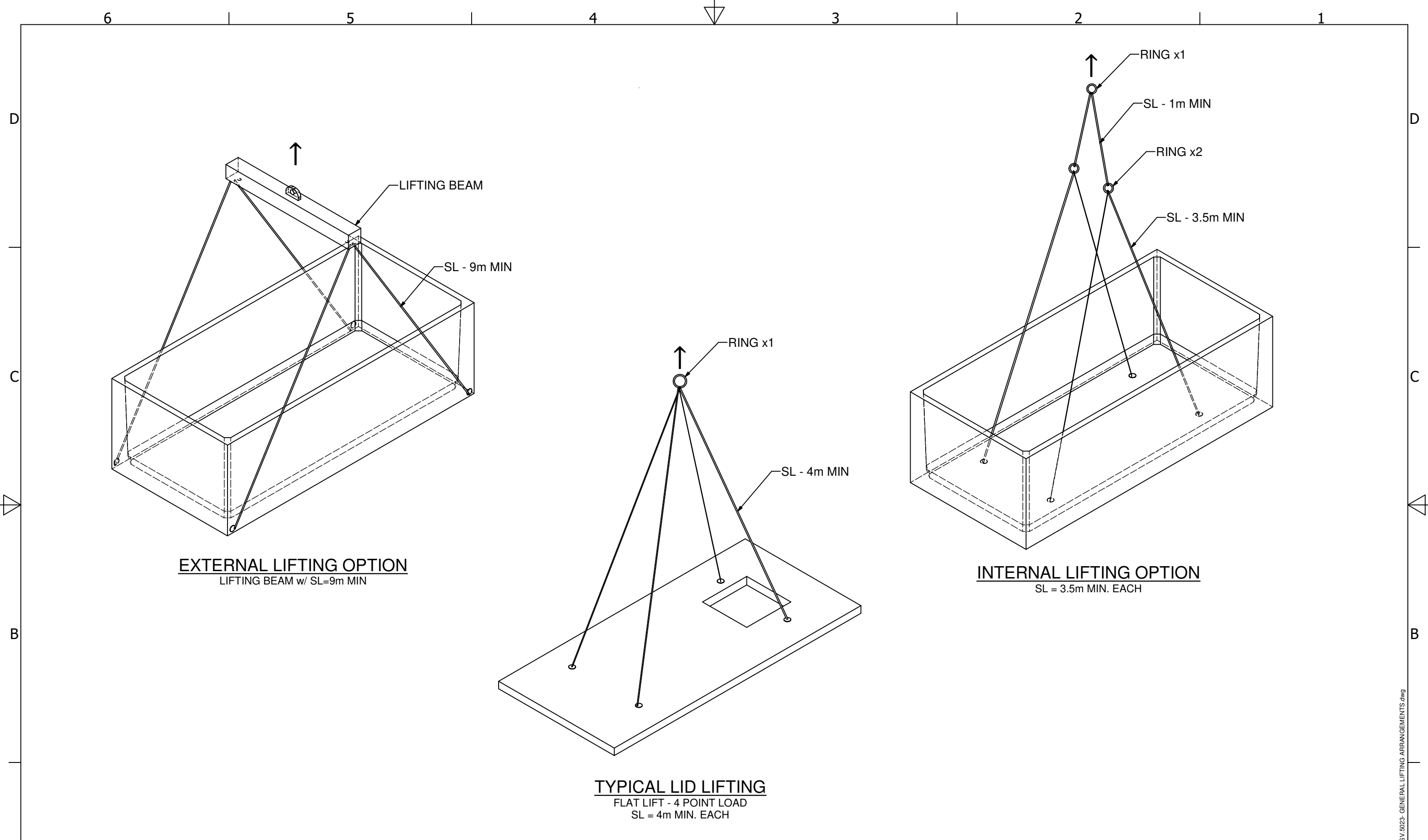



PROJECT :			
TITLE PERMISSIBLE PENETRATIONS 13.18 kL SPEL PRECAST CONCRETE TANK SV.5023-1300- CUSTOM TANK			
SCALE N.T.S	SIZE A3	SHEET 3	REV 1
CUSTOMER CODE :		DWG No. SP21-CT24640-C	



STANDARD LID FORMATIONS
FOR ADDITIONAL ACCESS OPENING AND POSITIONING OPTIONS
CONTACT SPEL

TOLERANCE: All Dimensions to Closest 10 mm & +/- 30 mm				ALL INTERCONNECTING PIPEWORK, PITS AND ASSOCIATED DRAINAGE BY OTHERS									
<div>CLIENT:</div>				<div>CONFIDENTIAL - The drawings must not be disclosed to any third parties without written permission from SPEL STORMWATER . Unauthorised disclosure may result in prosecution. © SPEL STORMWATER - This drawing is the property of SPEL STORMWATER ABN: 83 151 832 629 and is subject to return on demand. It is submitted for the use only in connection with the proposal and contracts of SPEL STORMWATER with the expressed conditions that it is not to be reproduced or copied in any form. This data must only be used in accordance with our standard terms and conditions. © Copyright SPEL STORMWATER accepts no responsibility for any loss or damage resulting from any person acting on this information. The details and dimensions contained in this document may change; please check with SPEL STORMWATER for confirmation of current specifications.</div>		<div>Drawn</div> <div>G.T</div>		<div>Date</div> <div>9/04/2021</div>		<div>PROJECT :</div>			
						<div>Check</div>		<div>Date</div>					
<div>1</div> <div>08/04/21</div>		<div>G.T</div>		<div>Verified</div>		<div>Date</div>		<div>SCALE</div> <div>N.T.S</div> <div>SIZE</div> <div>A3</div> <div>SHEET</div> <div>1</div> <div>REV</div> <div>1</div>					
<div>REV</div> <div>DATE</div>		<div>BY</div>		<div>Approved</div>		<div>Date</div>						<div>CUSTOMER CODE :</div> <div>DWG No.</div> <div>SP21-CT24650-C</div>	
<div>1</div> <div>08/04/21</div>		<div>G.T</div>		<div>Request No.</div> <div>RN211660</div>									
<div>INITIAL RELEASE</div>													
<div>DESCRIPTION</div>		<div>CHK</div>											



<div>11/21</div> <div>GT</div> <div>INITIAL ISSUE</div>					CLIENT:	<p>CONFIDENTIAL - The drawings must not be disclosed to any third parties without written permission from SPEL STORMWATER . Unauthorised disclosure may result in prosecution. © SPEL STORMWATER - This drawing is the property of SPEL STORMWATER ABN: 83 151 832 629 and is subject to return on demand. It is submitted for the use only in connection with the proposal and contracts of SPEL STORMWATER with the expressed conditions that it is not to be reproduced or copied in any form. This data must only be used in accordance with our standard terms and conditions. © Copyright SPEL STORMWATER accepts no responsibility for any loss or damage resulting from any person acting on this information. The details and dimensions contained in this document may change, please check with SPEL STORMWATER for confirmation of current specifications.</p>	Drawn	Date	<div> spelstormwater joy in water spel.com.au</div>	PROJECT :			
							GT	9/11/2021		TITLE			
Check	Date	GENERAL LIFTING ARRANGEMENT SPEL PRECAST CONCRETE TANK SV.5023											
Verified	Date	SCALE											
Approved	Date	SIZE											
Request No.				SHEET		REV							
				1		1							
				CUSTOMER CODE :		DWG No.							
						SP21-CT48180-C							

1	11/21	GT	INITIAL ISSUE	
REV	DATE	BY	DESCRIPTION	CHK