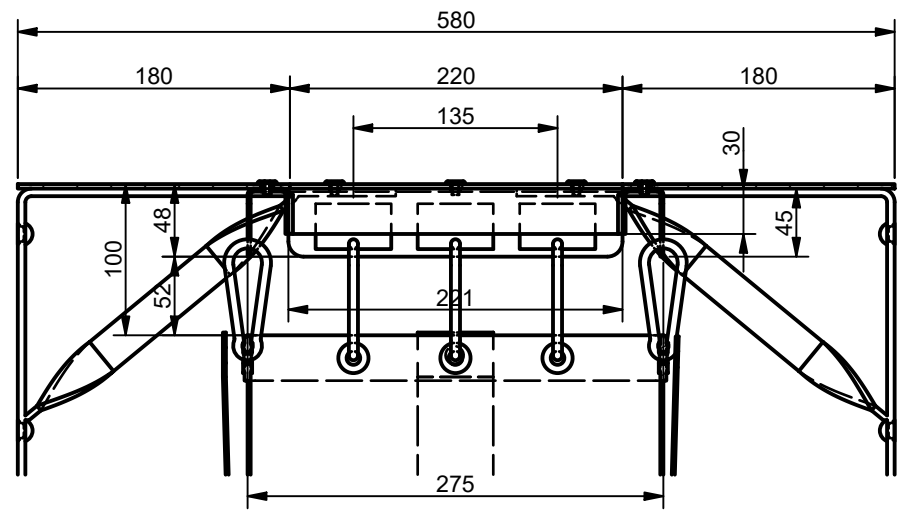
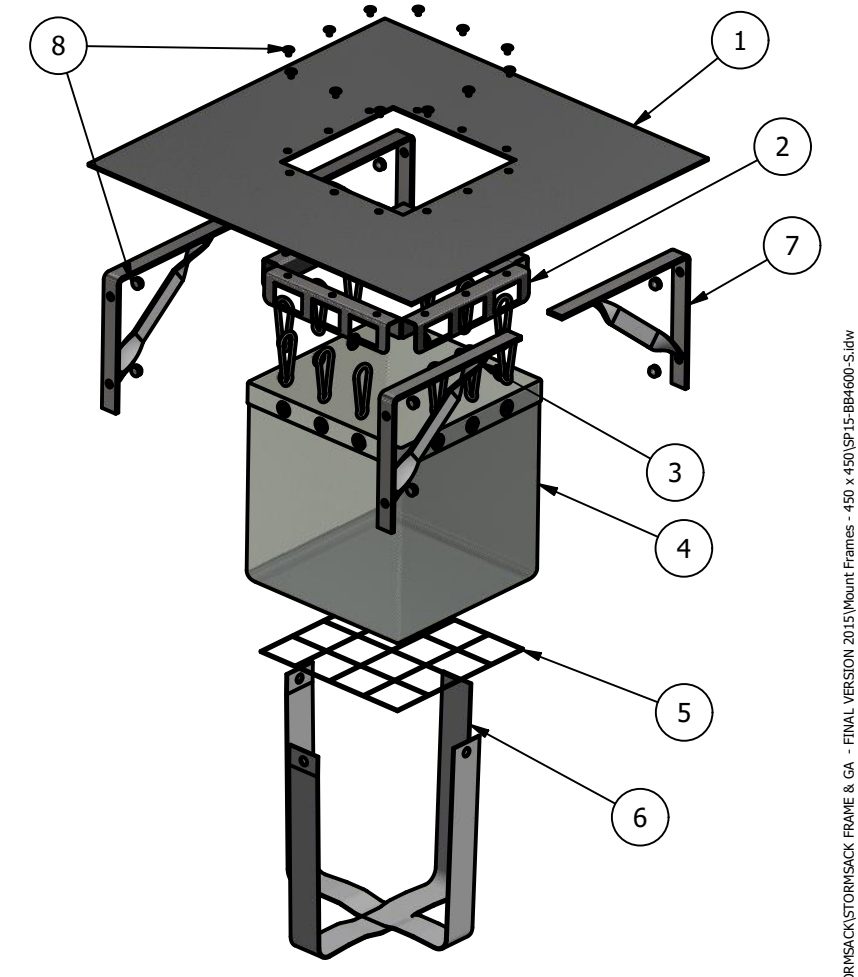


ISOMETRIC VIEW



SECTION B-B



ISOMETRIC VIEW
EXPLOSION

PARTS LIST			
ITEM	QTY	PART NUMBER	DESCRIPTION
1	1	COVER POLY PLASTIC	HDPE
2	1	METAL FRAME	STAINLESS STEEL 304
3	12	CARABINER CLIP	ALUMINIUM
4	1	CATCHMENT BAG	HDPE
5	1	BAG SUPPORT - METAL MESH	STAINLESS STEEL 304
6	2	STRAP 50mm	POLYESTER
7	4	GAL. SUPPORT BRACKETS	GALVANIZED
8	20	BLIND RIVET	STAINLESS STEEL 304

TOLERANCE: All Dimensions to Closest 10 mm & +/- 30 mm | ALL INTERCONNECTING PIPEWORK, PITS AND ASSOCIATED DRAINAGE BY OTHERS

REV	DATE	BY	DESCRIPTION	CHK
1	08/11/2021	R.R.	INITIAL RELEASE	

CLIENT:

CONFIDENTIAL - The drawings must not be disclosed to any third parties without written permission from SPEL STORMWATER. Unauthorised disclosure may result in prosecution.

© SPEL STORMWATER - This drawing is the property of SPEL STORMWATER ABN: 83 151 832 629 and is subject to return on demand. It is submitted for the use only in connection with the proposal and contracts of SPEL STORMWATER with the expressed conditions that it is not to be reproduced or copied in any form. This data must only be used in accordance with our standard terms and conditions.

© Copyright
SPEL STORMWATER accepts no responsibility for any loss or damage resulting from any person acting on this information. The details and dimensions contained in this document may change, please check with SPEL STORMWATER for confirmation of current specifications.

Drawn	Date
R.R.	08/11/2021
Check	Date
Verified	Date
Approved	Date
Request No.	



PROJECT :			
TITLE SPEL STOMSACK SSS.4545.C1 GENERAL ARRANGEMENT			
SCALE N.T.S	SIZE A3	SHEET 1	REV 1
CUSTOMER CODE : DWG No.		SP15-BB4600-S	