

SV.5023-1100 - 3D VIEW

| DRAWING INDEX  |   |
|----------------|---|
| DRAWING No.    | DRAWING TITLE                           |
| SP21-CT24810-C | COVER SHEET AND DRAWING INDEX           |
| SP21-CT24820-C | GENERAL NOTES PAGE                      |
| SP21-CT24830-C | GENERAL ARRANGEMENT                     |
| SP21-CT24840-C | PERMISSIBLE PENETRATIONS SHEETS 1,2 & 3 |
| SP21-CT24850-C | TANK LID PENETRATION OPTIONS            |
| SP21-CT48180-C | GENERAL LIFTING ARRANGEMENT             |

|     |          |     |                  |     |
|-----|----------|-----|------------------|-----|
|     |          |     |                  |     |
| 1   | 08/04/21 | G.T | INITIAL RELEASE  |     |
| 2   | 11/21    | G.T | GENERAL REVISION |     |
| REV | DATE     | BY  | DESCRIPTION      | CHK |

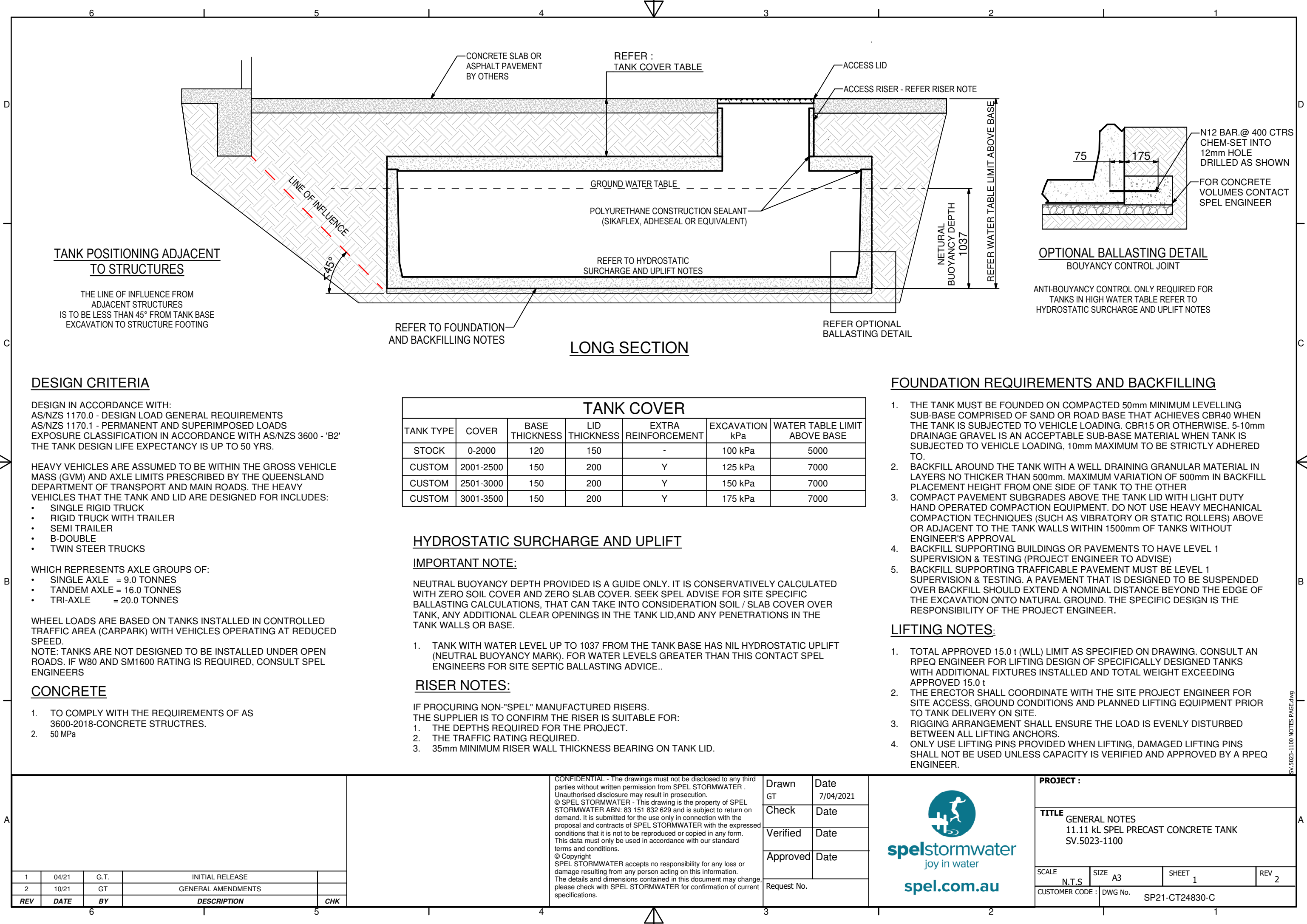
CONFIDENTIAL - The drawings must not be disclosed to any third parties without written permission from SPEL STORMWATER .  
Unauthorised disclosure may result in prosecution.  
© SPEL STORMWATER - This drawing is the property of SPEL STORMWATER ABN: 83 151 832 629 and is subject to return on demand. It is submitted for the use only in connection with the proposal and contracts of SPEL STORMWATER with the expressed conditions that it is not to be reproduced or copied in any form. This data must only be used in accordance with our standard terms and conditions.  
© Copyright  
SPEL STORMWATER accepts no responsibility for any loss or damage resulting from any person acting on this information. The details and dimensions contained in this document may change, please check with SPEL STORMWATER for confirmation of current specifications.

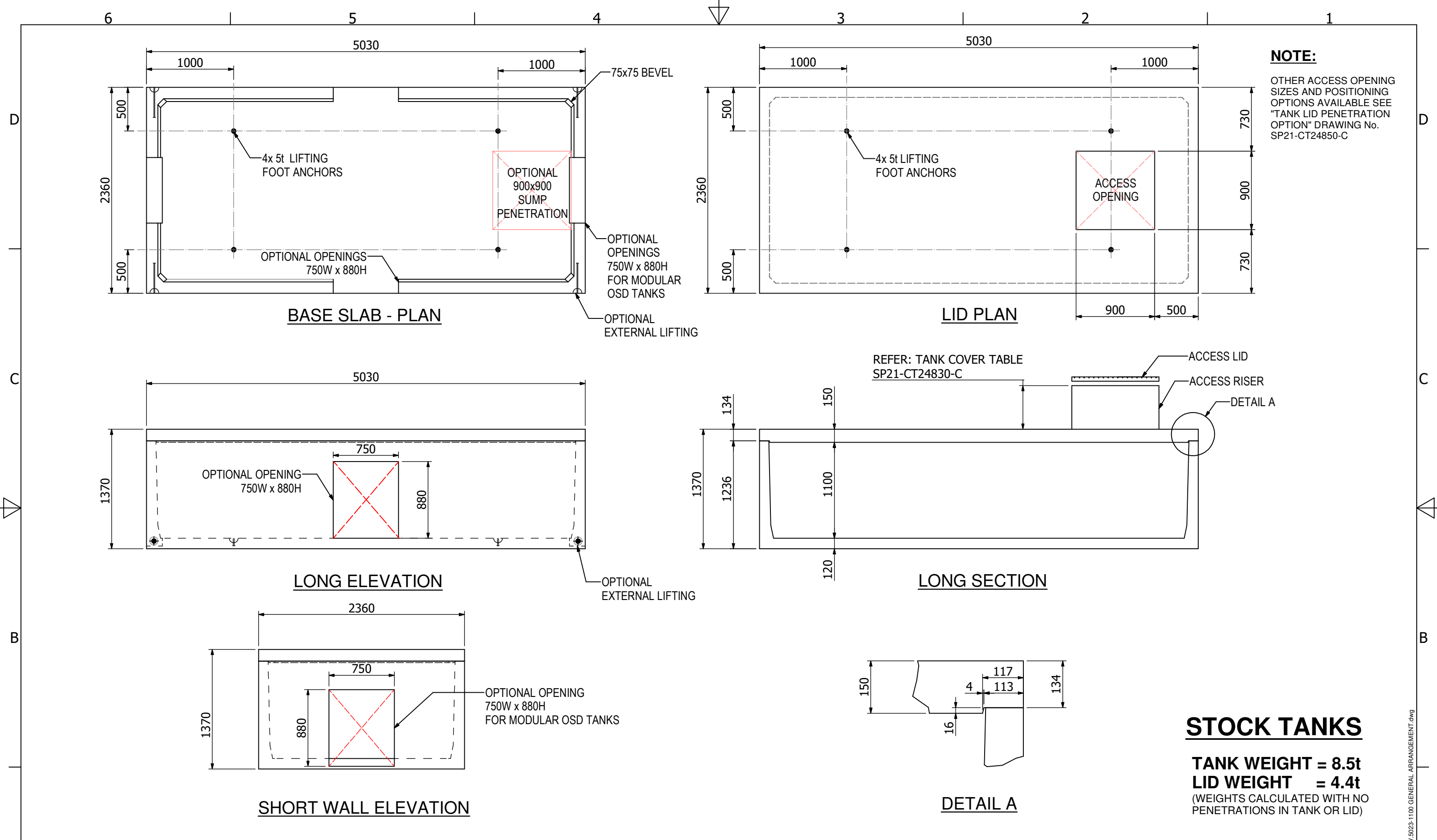
|             |           |
|-------------|-----------|
| Drawn       | Date      |
| G.T         | 9/04/2021 |
| Check       | Date      |
| Verified    | Date      |
| Approved    | Date      |
| Request No. |           |
| RN211676    |           |



|   |            |                           |          |
|---|------------|---------------------------|----------|
| PROJECT :   |            |                           |          |
| TITLE<br>COVER SHEET AND DRAWING INDEX<br>11.11 kL SPEL PRECAST CONCRETE TANK<br>SV.5023-1100 |            |                           |          |
| SCALE<br>N.T.S  | SIZE<br>A3 | SHEET<br>1                | REV<br>2 |
| CUSTOMER CODE :   |            | DWG No.<br>SP21-CT24810-C |          |

SV.5023-1100 COVER PAGE.dwg






# STOCK TANKS

**TANK WEIGHT = 8.5t**  
**LID WEIGHT = 4.4t**

(WEIGHTS CALCULATED WITH NO PENETRATIONS IN TANK OR LID)

|   |          |           |  |             |         |   |       |      |  |  |   |
|---|----------|-----------|--|-------------|---------|---|-------|------|--|--|---|
| A |          |           |  |             | CLIENT: | CONFIDENTIAL - The drawings must not be disclosed to any third parties without written permission from SPEL STORMWATER .<br>Unauthorised disclosure may result in prosecution.<br>© SPEL STORMWATER - This drawing is the property of SPEL STORMWATER ABN: 83 151 832 629 and is subject to return on demand. It is submitted for the use only in connection with the proposal and contracts of SPEL STORMWATER with the expressed conditions that it is not to be reproduced or copied in any form. This data must only be used in accordance with our standard terms and conditions.<br>© Copyright<br>SPEL STORMWATER accepts no responsibility for any loss or damage resulting from any person acting on this information. The details and dimensions contained in this document may change, please check with SPEL STORMWATER for confirmation of current specifications. | Drawn | Date | <br><b>spelstormwater</b><br>joy in water<br><br><b>spel.com.au</b> | PROJECT :<br><br><b>TITLE</b> GENERAL ARRANGEMENT<br>11.11 kL SPEL PRECAST CONCRETE TANK<br>SV.5023-1100 | A |
|   | GT       | 8/04/2021 |  |             |         |   |       |      |  |  |   |
|   | Check    | Date      |  |             |         |   |       |      |  |  |   |
|   | Verified | Date      |  |             |         |   |       |      |  |  |   |
|   |          |           |  | Approved    | Date    |   |       |      |  |  |   |
|   |          |           |  | Request No. |         |   |       |      |  |  |   |
|   |          |           |  |             |         |   |       |      |  |  |   |
|   |          |           |  |             |         |   |       |      |  |  |   |
|   |          |           |  |             |         |   |       |      |  |  |   |
|   |          |           |  |             |         |   |       |      |  |  |   |
|   |          |           |  |             |         |   |       |      |  |  |   |
|   |          |           |  |             |         |   |       |      |  |  |   |
|   |          |           |  |             |         |   |       |      |  |  |   |
|   |          |           |  |             |         |   |       |      |  |  |   |
|   |          |           |  |             |         |   |       |      |  |  |   |
|   |          |           |  |             |         |   |       |      |  |  |   |
|   |          |           |  |             |         |   |       |      |  |  |   |
|   |          |           |  |             |         |   |       |      |  |  |   |
|   |          |           |  |             |         |   |       |      |  |  |   |
|   |          |           |  |             |         |   |       |      |  |  |   |
|   |          |           |  |             |         |   |       |      |  |  |   |
|   |          |           |  |             |         |   |       |      |  |  |   |
|   |          |           |  |             |         |   |       |      |  |  |   |
|   |          |           |  |             |         |   |       |      |  |  |   |
|   |          |           |  |             |         |   |       |      |  |  |   |
|   |          |           |  |             |         |   |       |      |  |  |   |
|   |          |           |  |             |         |   |       |      |  |  |   |
|   |          |           |  |             |         |   |       |      |  |  |   |
|   |          |           |  |             |         |   |       |      |  |  |   |
|   |          |           |  |             |         |   |       |      |  |  |   |
|   |          |           |  |             |         |   |       |      |  |  |   |
|   |          |           |  |             |         |   |       |      |  |  |   |
|   |          |           |  |             |         |   |       |      |  |  |   |
|   |          |           |  |             |         |   |       |      |  |  |   |
|   |          |           |  |             |         |   |       |      |  |  |   |
|   |          |           |  |             |         |   |       |      |  |  |   |
|   |          |           |  |             |         |   |       |      |  |  |   |
|   |          |           |  |             |         |   |       |      |  |  |   |
|   |          |           |  |             |         |   |       |      |  |  |   |
|   |          |           |  |             |         |   |       |      |  |  |   |
|   |          |           |  |             |         |   |       |      |  |  |   |
|   |          |           |  |             |         |   |       |      |  |  |   |
|   |          |           |  |             |         |   |       |      |  |  |   |
|   |          |           |  |             |         |   |       |      |  |  |   |
|   |          |           |  |             |         |   |       |      |  |  |   |
|   |          |           |  |             |         |   |       |      |  |  |   |
|   |          |           |  |             |         |   |       |      |  |  |   |
|   |          |           |  |             |         |   |       |      |  |  |   |
|   |          |           |  |             |         |   |       |      |  |  |   |
|   |          |           |  |             |         |   |       |      |  |  |   |
|   |          |           |  |             |         |   |       |      |  |  |   |
|   |          |           |  |             |         |   |       |      |  |  |   |
|   |          |           |  |             |         |   |       |      |  |  |   |
|   |          |           |  |             |         |   |       |      |  |  |   |
|   |          |           |  |             |         |   |       |      |  |  |   |
|   |          |           |  |             |         |   |       |      |  |  |   |
|   |          |           |  |             |         |   |       |      |  |  |   |
|   |          |           |  |             |         |   |       |      |  |  |   |
|   |          |           |  |             |         |   |       |      |  |  |   |
|   |          |           |  |             |         |   |       |      |  |  |   |
|   |          |           |  |             |         |   |       |      |  |  |   |
|   |          |           |  |             |         |   |       |      |  |  |   |
|   |          |           |  |             |         |   |       |      |  |  |   |
|   |          |           |  |             |         |   |       |      |  |  |   |
|   |          |           |  |             |         |   |       |      |  |  |   |
|   |          |           |  |             |         |   |       |      |  |  |   |
|   |          |           |  |             |         |   |       |      |  |  |   |
|   |          |           |  |             |         |   |       |      |  |  |   |
|   |          |           |  |             |         |   |       |      |  |  |   |
|   |          |           |  |             |         |   |       |      |  |  |   |
|   |          |           |  |             |         |   |       |      |  |  |   |
|   |          |           |  |             |         |   |       |      |  |  |   |
|   |          |           |  |             |         |   |       |      |  |  |   |
|   |          |           |  |             |         |   |       |      |  |  |   |
|   |          |           |  |             |         |   |       |      |  |  |   |
|   |          |           |  |             |         |   |       |      |  |  |   |
|   |          |           |  |             |         |   |       |      |  |  |   |
|   |          |           |  |             |         |   |       |      |  |  |   |
|   |          |           |  |             |         |   |       |      |  |  |   |
|   |          |           |  |             |         |   |       |      |  |  |   |
|   |          |           |  |             |         |   |       |      |  |  |   |
|   |          |           |  |             |         |   |       |      |  |  |   |
|   |          |           |  |             |         |   |       |      |  |  |   |
|   |          |           |  |             |         |   |       |      |  |  |   |
|   |          |           |  |             |         |   |       |      |  |  |   |
|   |          |           |  |             |         |   |       |      |  |  |   |
|   |          |           |  |             |         |   |       |      |  |  |   |
|   |          |           |  |             |         |   |       |      |  |  |   |
|   |          |           |  |             |         |   |       |      |  |  |   |
|   |          |           |  |             |         |   |       |      |  |  |   |
|   |          |           |  |             |         |   |       |      |  |  |   |
|   |          |           |  |             |         |   |       |      |  |  |   |
|   |          |           |  |             |         |   |       |      |  |  |   |
|   |          |           |  |             |         |   |       |      |  |  |   |
|   |          |           |  |             |         |   |       |      |  |  |   |
|   |          |           |  |             |         |   |       |      |  |  |   |
|   |          |           |  |             |         |   |       |      |  |  |   |
|   |          |           |  |             |         |   |       |      |  |  |   |
|   |          |           |  |             |         |   |       |      |  |  |   |
|   |          |           |  |             |         |   |       |      |  |  |   |
|   |          |           |  |             |         |   |       |      |  |  |   |
|   |          |           |  |             |         |   |       |      |  |  |   |
|   |          |           |  |             |         |   |       |      |  |  |   |
|   |          |           |  |             |         |   |       |      |  |  |   |
|   |          |           |  |             |         |   |       |      |  |  |   |
|   |          |           |  |             |         |   |       |      |  |  |   |
|   |          |           |  |             |         |   |       |      |  |  |   |
|   |          |           |  |             |         |   |       |      |  |  |   |
|   |          |           |  |             |         |   |       |      |  |  |   |
|   |          |           |  |             |         |   |       |      |  |  |   |
|   |          |           |  |             |         |   |       |      |  |  |   |
|   |          |           |  |             |         |   |       |      |  |  |   |
|   |          |           |  |             |         |   |       |      |  |  |   |
|   |          |           |  |             |         |   |       |      |  |  |   |
|   |          |           |  |             |         |   |       |      |  |  |   |
|   |          |           |  |             |         |   |       |      |  |  |   |
|   |          |           |  |             |         |   |       |      |  |  |   |
|   |          |           |  |             |         |   |       |      |  |  |   |
|   |          |           |  |             |         |   |       |      |  |  |   |
|   |          |           |  |             |         |   |       |      |  |  |   |
|   |          |           |  |             |         |   |       |      |  |  |   |
|   |          |           |  |             |         |   |       |      |  |  |   |
|   |          |           |  |             |         |   |       |      |  |  |   |
|   |          |           |  |             |         |   |       |      |  |  |   |
|   |          |           |  |             |         |   |       |      |  |  |   |
|   |          |           |  |             |         |   |       |      |  |  |   |
|   |          |           |  |             |         |   |       |      |  |  |   |
|   |          |           |  |             |         |   |       |      |  |  |   |
|   |          |           |  |             |         |   |       |      |  |  |   |
|   |          |           |  |             |         |   |       |      |  |  |   |
|   |          |           |  |             |         |   |       |      |  |  |   |
|   |          |           |  |             |         |   |       |      |  |  |   |
|   |          |           |  |             |         |   |       |      |  |  |   |
|   |          |           |  |             |         |   |       |      |  |  |   |
|   |          |           |  |             |         |   |       |      |  |  |   |
|   |          |           |  |             |         |   |       |      |  |  |   |
|   |          |           |  |             |         |   |       |      |  |  |   |
|   |          |           |  |             |         |   |       |      |  |  |   |
|   |          |           |  |             |         |   |       |      |  |  |   |
|   |          |           |  |             |         |   |       |      |  |  |   |
|   |          |           |  |             |         |   |       |      |  |  |   |
|   |          |           |  |             |         |   |       |      |  |  |   |
|   |          |           |  |             |         |   |       |      |  |  |   |
|   |          |           |  |             |         |   |       |      |  |  |   |
|   |          |           |  |             |         |   |       |      |  |  |   |
|   |          |           |  |             |         |   |       |      |  |  |   |
|   |          |           |  |             |         |   |       |      |  |  |   |
|   |          |           |  |             |         |   |       |      |  |  |   |
|   |          |           |  |             |         |   |       |      |  |  |   |
|   |          |           |  |             |         |   |       |      |  |  |   |
|   |          |           |  |             |         |   |       |      |  |  |   |
|   |          |           |  |             |         |   |       |      |  |  |   |
|   |          |           |  |             |         |   |       |      |  |  |   |
|   |          |           |  |             |         |   |       |      |  |  |   |
|   |          |           |  |             |         |   |       |      |  |  |   |
|   |          |           |  |             |         |   |       |      |  |  |   |
|   |          |           |  |             |         |   |       |      |  |  |   |
|   |          |           |  |             |         |   |       |      |  |  |   |
|   |          |           |  |             |         |   |       |      |  |  |   |
|   |          |           |  |             |         |   |       |      |  |  |   |
|   |          |           |  |             |         |   |       |      |  |  |   |
|   |          |           |  |             |         |   |       |      |  |  |   |
|   |          |           |  |             |         |   |       |      |  |  |   |
|   |          |           |  |             |         |   |       |      |  |  |   |
|   |          |           |  |             |         |   |       |      |  |  |   |
|   |          |           |  |             |         |   |       |      |  |  |   |
|   |          |           |  |             |         |   |       |      |  |  |   |
|   |          |           |  |             |         |   |       |      |  |  |   |
|   |          |           |  |             |         |   |       |      |  |  |   |
|   |          |           |  |             |         |   |       |      |  |  |   |
|   |          |           |  |             |         |   |       |      |  |  |   |



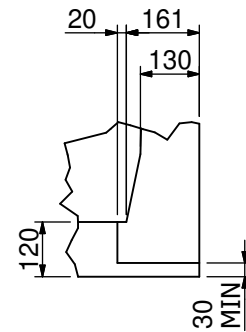
# STOCK TANKS

## PLEASE NOTE:

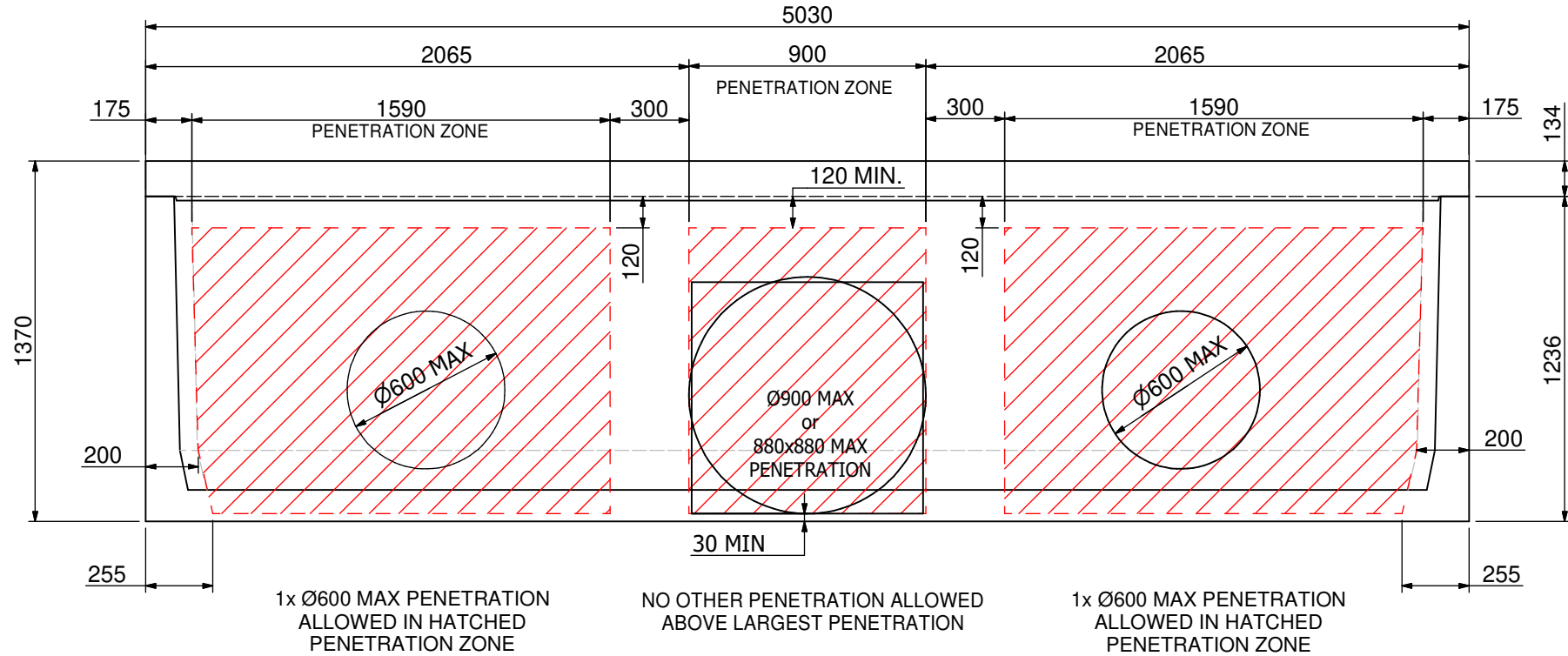
THESE GUIDELINES ARE FOR A STOCK TANK WITH STANDARD REINFORCEMENT.

IF REQUIRED PENETRATIONS ARE OUTSIDE OF THE GUIDELINES SHOWN, CONTACT SPEL WHO WILL SEEK FURTHER ENGINEERING ADVICE.

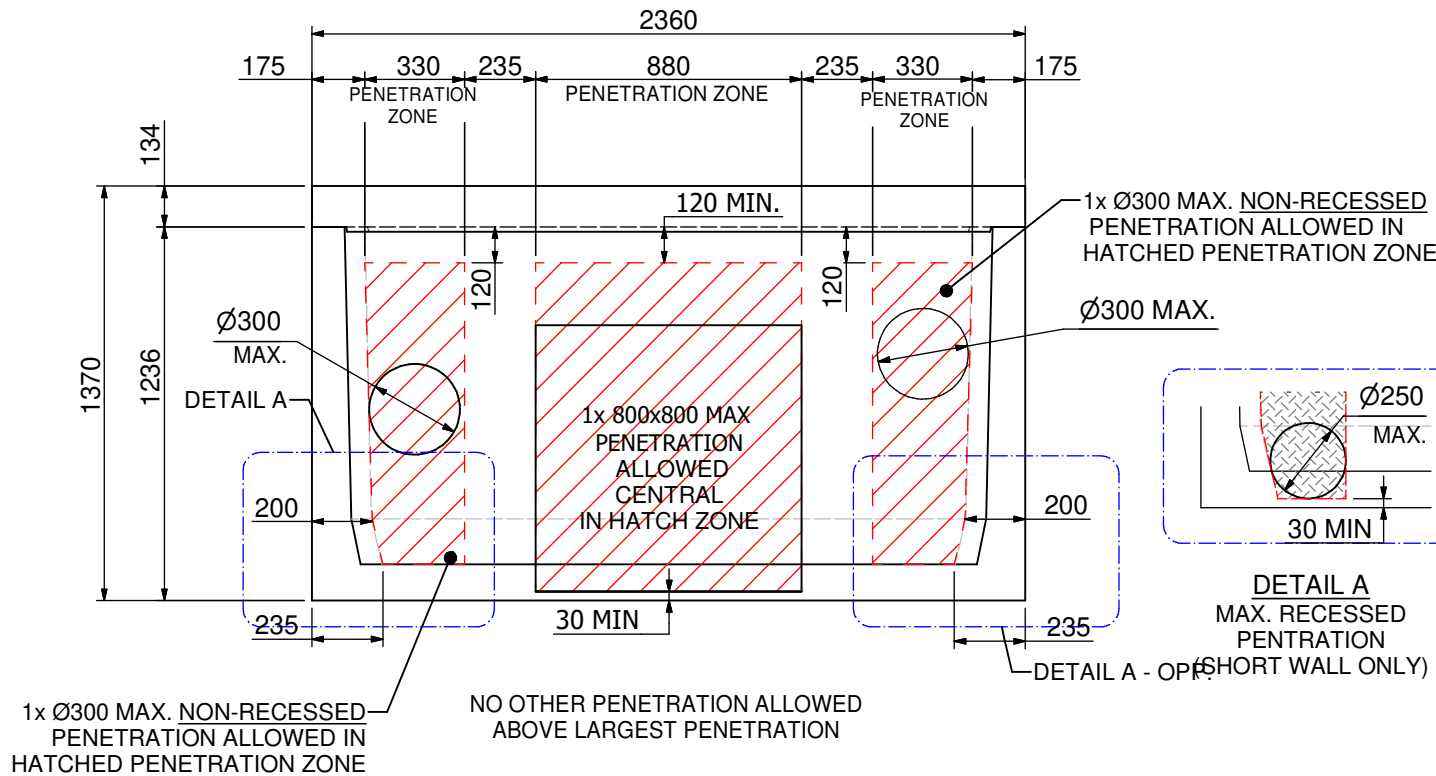
CUSTOM TANKS CAN PROVIDE PENETRATIONS OUTSIDE THESE GUIDELINES REFER.  
"PERMISSIBLE PENETRATIONS - CUSTOM TANKS"  
ON DRAWINGS SP21-CT24840 - C SHEET 2 & 3  
FOR A GUIDE PRIOR TO TANK PRODUCTION.



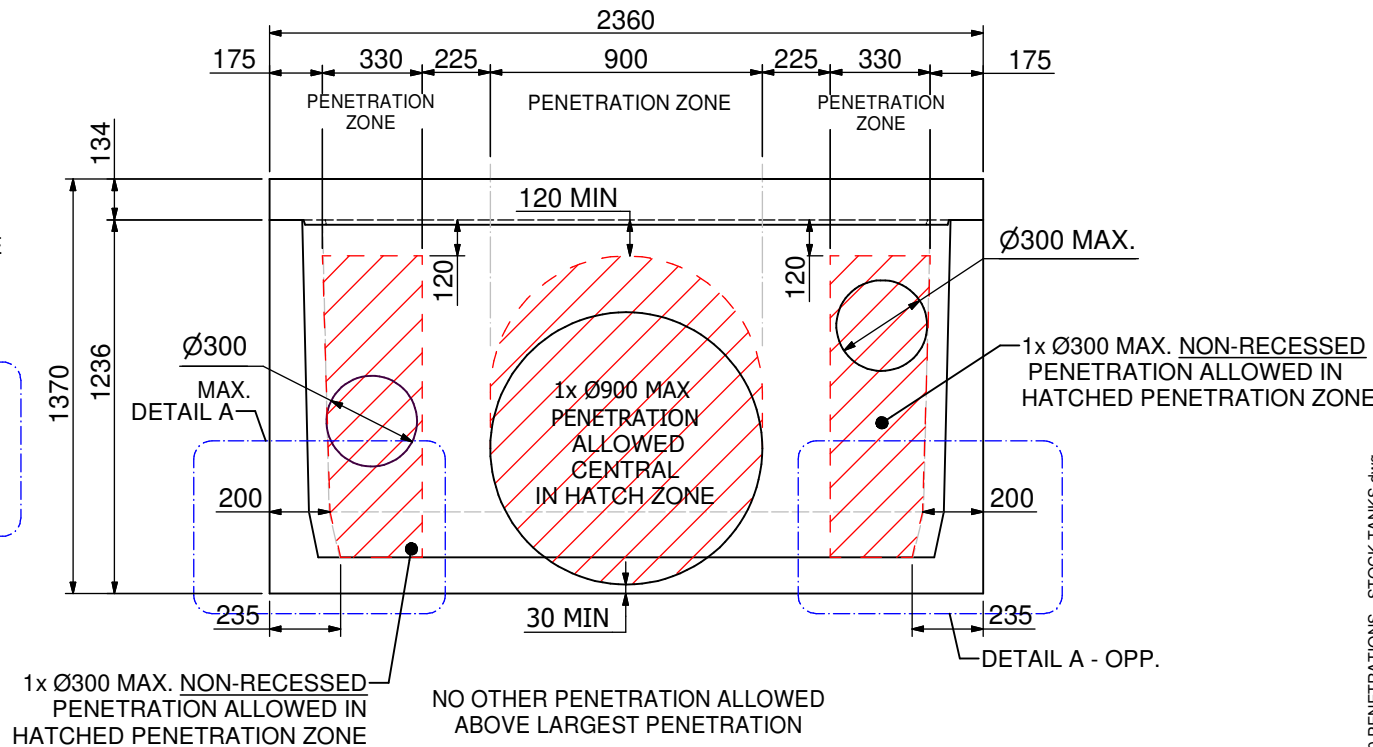
TYPICAL BASE  
RECESS DETAIL



LONG WALL - SINGLE LARGEST PERMISSIBLE PENETRATION



SHORT WALL - 880x880 MAX. PENETRATION



SHORT WALL - Ø 900 MAX PENETRATION

|     |       |     |                      |     |
|-----|-------|-----|----------------------|-----|
| 1   | 07/21 | G.T | INITIAL RELEASE      |     |
| 2   | 10/21 | GT  | DRAWING SET EXPANDED |     |
| REV | DATE  | BY  | DESCRIPTION          | CHK |

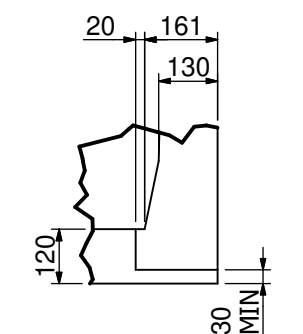
CONFIDENTIAL - The drawings must not be disclosed to any third parties without written permission from SPEL STORMWATER .  
Unauthorised disclosure may result in prosecution.  
© SPEL STORMWATER - This drawing is the property of SPEL STORMWATER ABN: 83 151 832 629 and is subject to return on demand. It is submitted for the use only in connection with the proposal and contracts of SPEL STORMWATER with the expressed conditions that it is not to be reproduced or copied in any form. This data must only be used in accordance with our standard terms and conditions.  
© Copyright  
SPEL STORMWATER accepts no responsibility for any loss or damage resulting from any person acting on this information. The details and dimensions contained in this document may change, please check with SPEL STORMWATER for confirmation of current specifications.

|             |           |
|-------------|-----------|
| Drawn       | Date      |
| GT          | 7/04/2021 |
| Check       | Date      |
| Verified    | Date      |
| Approved    | Date      |
| Request No. |           |

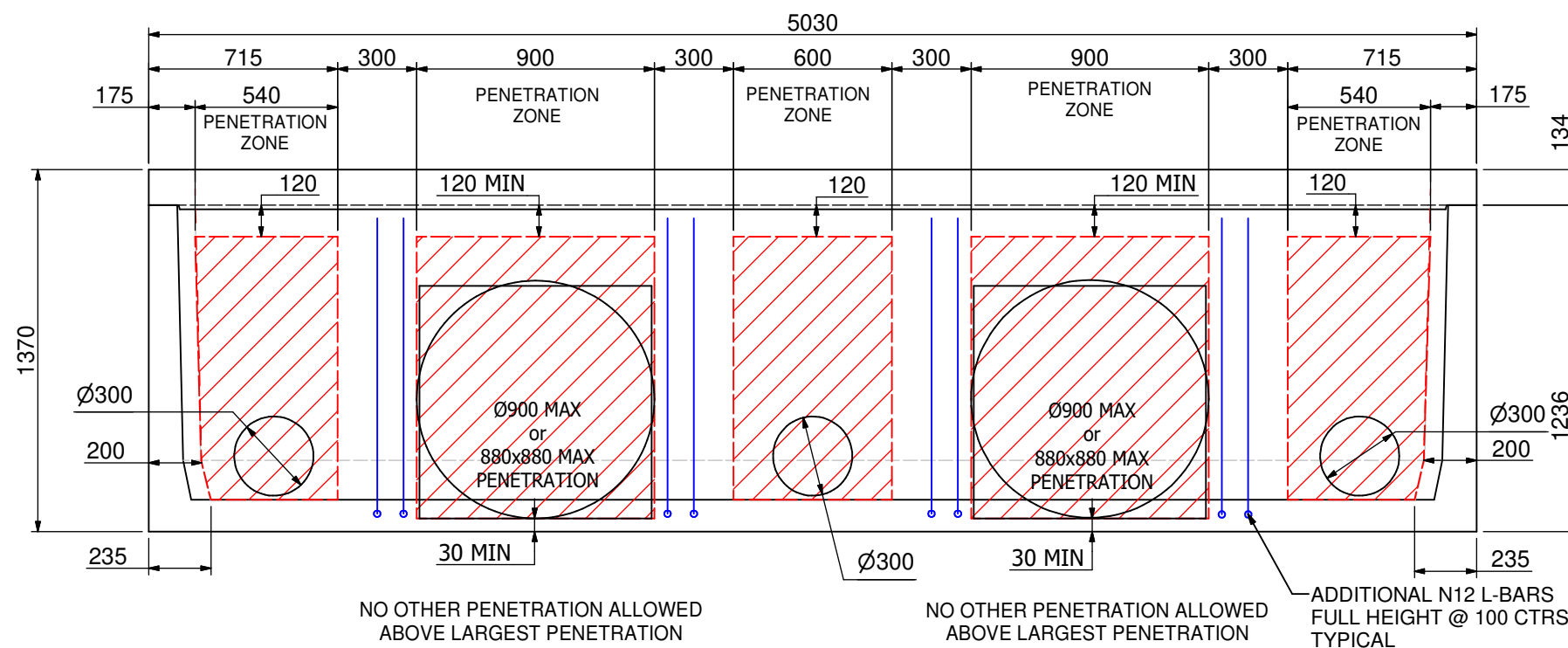


|   |            |                |          |
|---|------------|----------------|----------|
| PROJECT :   |            |                |          |
| TITLE PERMISSIBLE PENETRATIONS<br>11.11 KL SPEL PRECAST CONCRETE TANK<br>SV.5023-1100 STOCK TANKS |            |                |          |
| SCALE<br>N.T.S  | SIZE<br>A3 | SHEET<br>1     | REV<br>2 |
| CUSTOMER CODE :<br>DWG No.  |            | SP21-CT24840-C |          |

# CUSTOM TANKS



TYPICAL BASE RECESS DETAIL



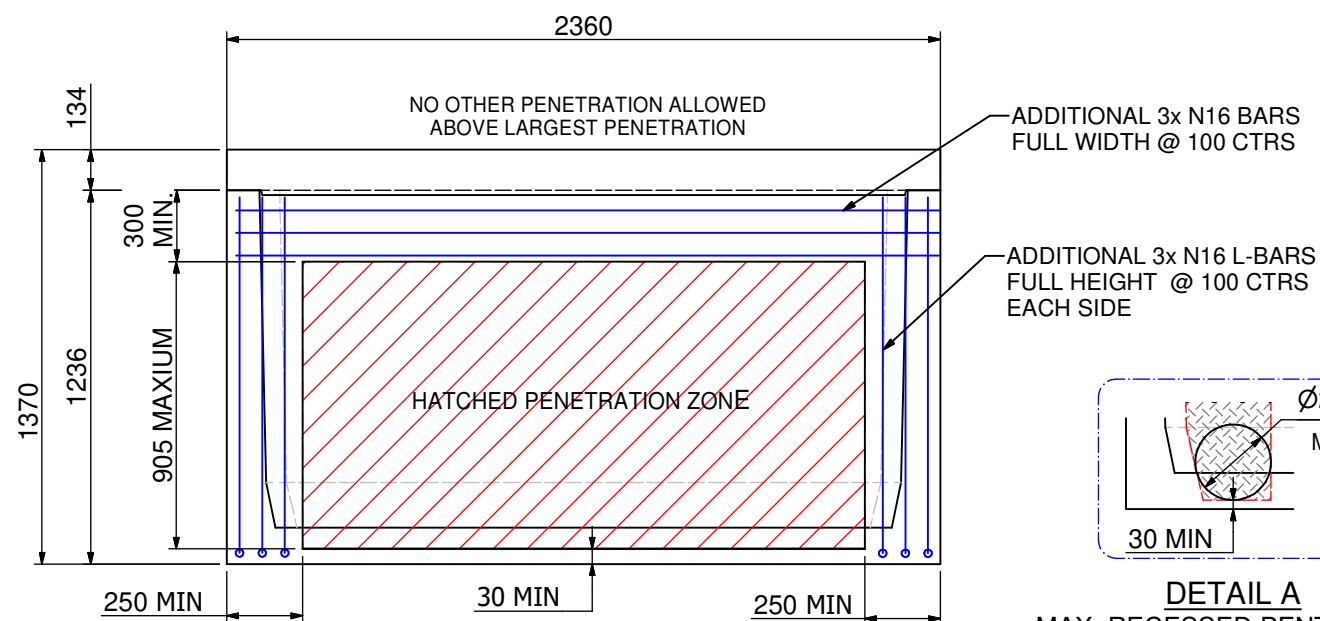
LONG WALL - 2x LARGEST PERMISSIBLE PENETRATIONS

## IMPORTANT NOTE:

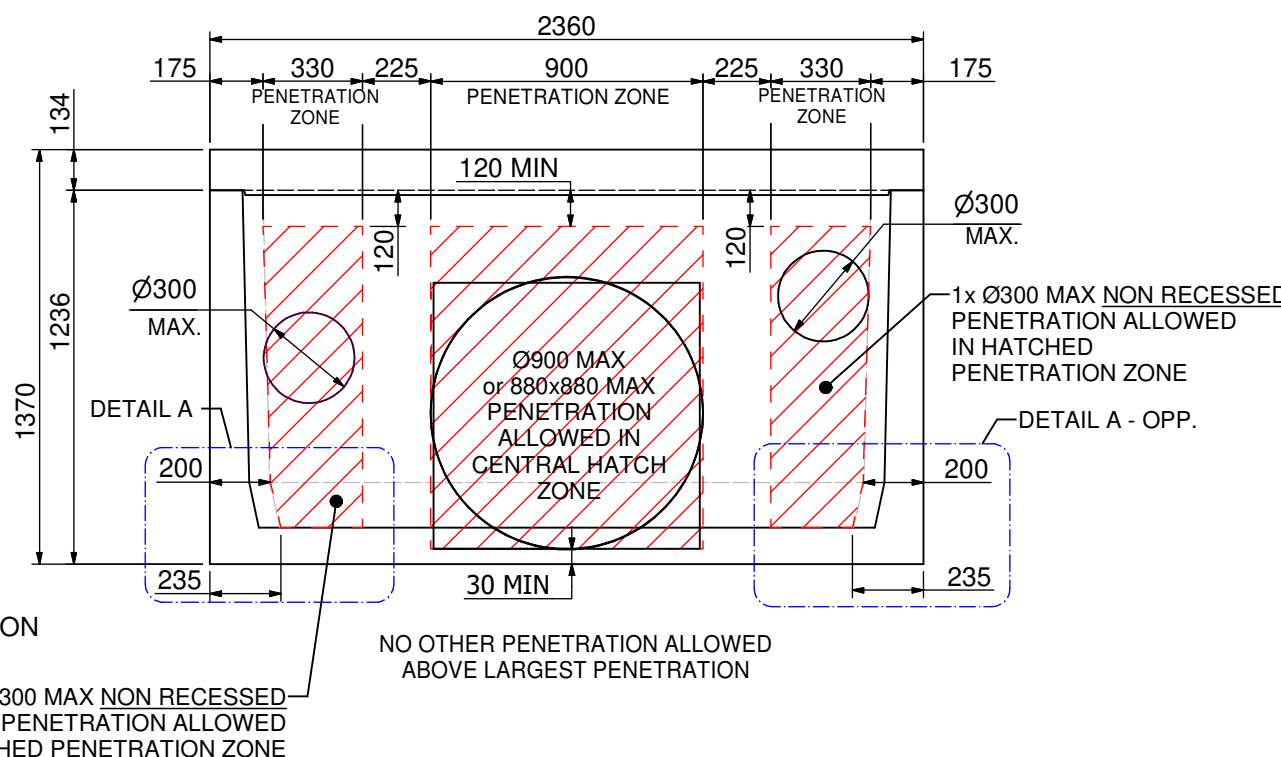
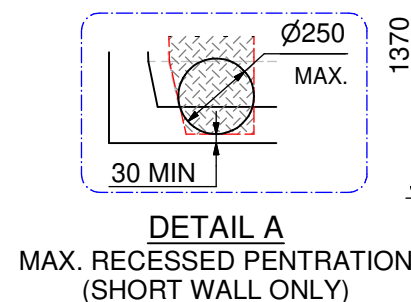
THESE PENETRATIONS CANNOT BE PERFORMED TO A STANDARD TANK.

THEY ARE REQUIRED TO BE ARRANGED WITH SPEL, PRIOR TO POURING THE TANK SO ADDITIONAL REINFORCEMENT CAN BE INCLUDED.

FOR STANDARD PERMISSIBLE PENETRATION REFER DRAWING SP21-CT24840-C SHEET 1 FOR ADDITIONAL PENETRATION COMBINATIONS CONTACT SPEL FOR DESIGN / ENGINEERING ASSISTANCE.



SHORT WALL - MAX. CUSTOM PENETRATION



SHORT WALL - Ø 900 MAX PENETRATION

CONFIDENTIAL - The drawings must not be disclosed to any third parties without written permission from SPEL STORMWATER. Unauthorised disclosure may result in prosecution.  
© SPEL STORMWATER - This drawing is the property of SPEL STORMWATER ABN: 83 151 832 629 and is subject to return on demand. It is submitted for the use only in connection with the proposal and contracts of SPEL STORMWATER with the expressed conditions that it is not to be reproduced or copied in any form. This data must only be used in accordance with our standard terms and conditions.  
© Copyright  
SPEL STORMWATER accepts no responsibility for any loss or damage resulting from any person acting on this information. The details and dimensions contained in this document may change, please check with SPEL STORMWATER for confirmation of current specifications.

Drawn GT  
Date 7/04/2021  
Check  
Date  
Verified  
Date  
Approved  
Date  
Request No.



PROJECT :

TITLE PERMISSIBLE PENETRATIONS  
11.11 KL SPEL PRECAST CONCRETE TANK  
SV.5023-1100- CUSTOM TANKS

SCALE N.T.S. SIZE A3 SHEET 2 REV 1  
CUSTOMER CODE : DWG No. SP21-CT24840-C

| REV | DATE  | BY  | DESCRIPTION     | CHK |
|-----|-------|-----|-----------------|-----|
| 1   | 11/21 | G.T | INITIAL RELEASE |     |

SV.5023-1100 PENETRATIONS - CUSTOM TANKS PAGE 1.dwg

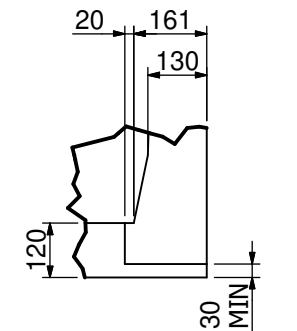
CUSTOM TANKS

IMPORTANT NOTE:

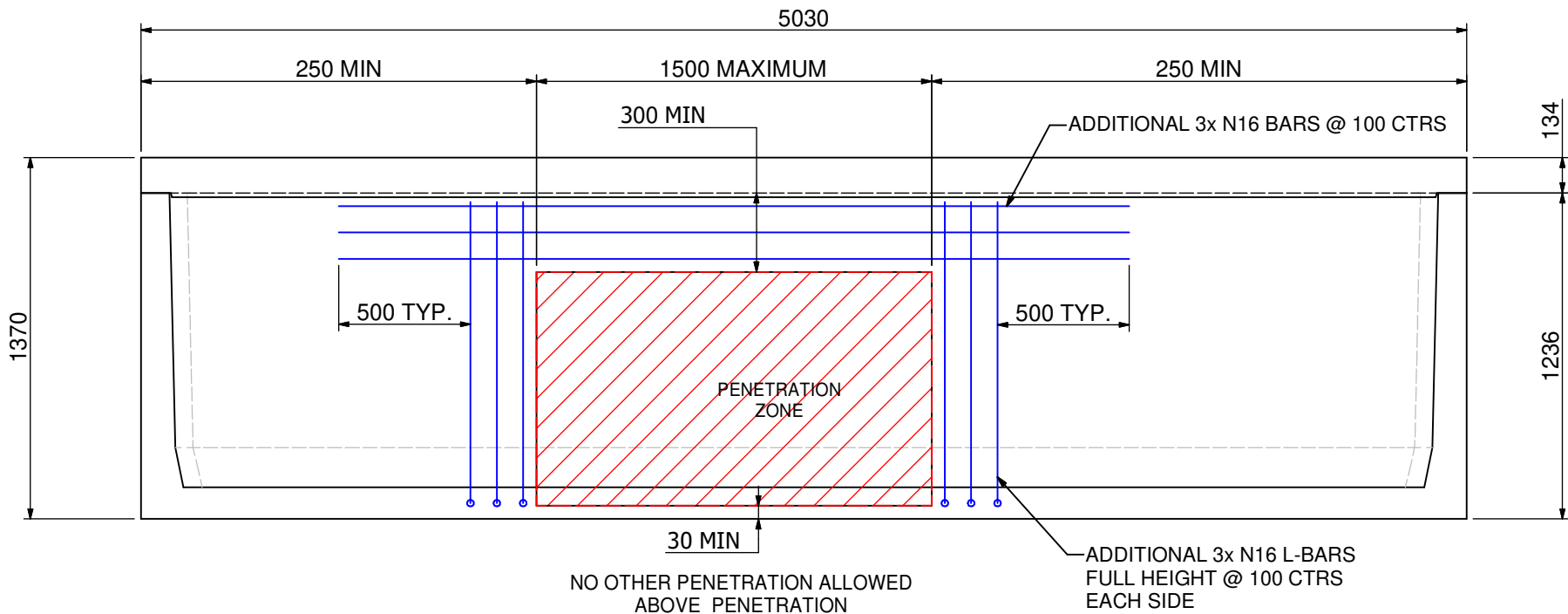
THESE PENETRATIONS CANNOT BE PERFORMED TO A STANDARD TANK.

THEY ARE REQUIRED TO BE ARRANGED WITH SPEL, PRIOR TO POURING THE TANK SO ADDITIONAL REINFORCEMENT CAN BE INCLUDED.

FOR STANDARD PERMISSIBLE PENETRATION REFER DRAWING SP21-CT24840-C SHEET 1 FOR ADDITIONAL PENETRATION COMBINATIONS CONTACT SPEL FOR DESIGN / ENGINEERING ASSISTANCE.



TYPICAL BASE RECESS DETAIL



LONG WALL - MAXIMUM SINGLE PENETRATION

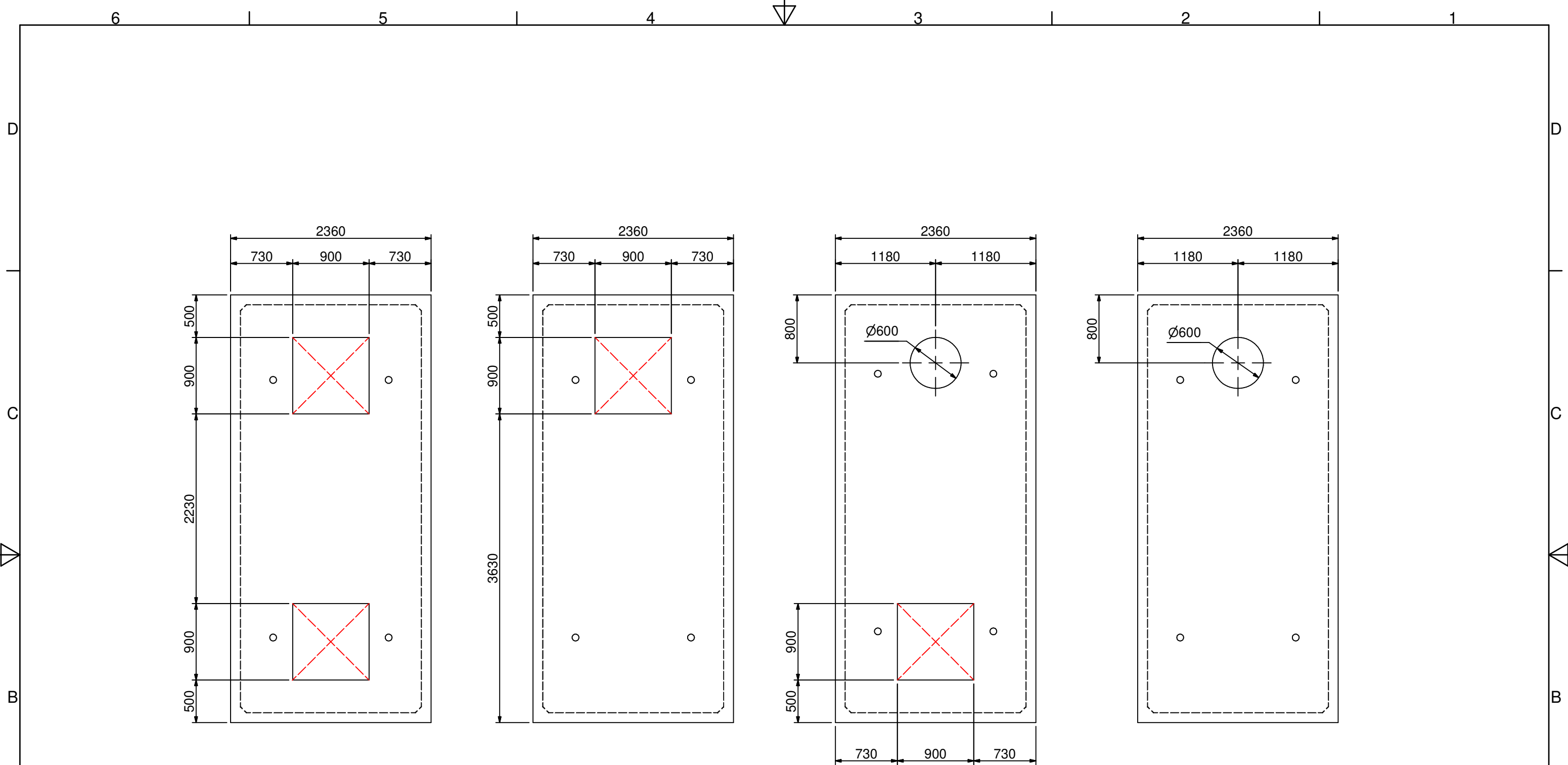
|     |            |     |                 |     |
|-----|------------|-----|-----------------|-----|
| 1   | 10/11/2020 | G.T | INITIAL RELEASE |     |
| REV | DATE       | BY  | DESCRIPTION     | CHK |

CONFIDENTIAL - The drawings must not be disclosed to any third parties without written permission from SPEL STORMWATER . Unauthorised disclosure may result in prosecution.  
© SPEL STORMWATER - This drawing is the property of SPEL STORMWATER ABN: 83 151 832 629 and is subject to return on demand. It is submitted for the use only in connection with the proposal and contracts of SPEL STORMWATER with the expressed conditions that it is not to be reproduced or copied in any form. This data must only be used in accordance with our standard terms and conditions.  
© Copyright  
SPEL STORMWATER accepts no responsibility for any loss or damage resulting from any person acting on this information. The details and dimensions contained in this document may change, please check with SPEL STORMWATER for confirmation of current specifications.


|             |                   |
|-------------|-------------------|
| Drawn<br>GT | Date<br>7/04/2021 |
| Check       | Date              |
| Verified    | Date              |
| Approved    | Date              |
| Request No. |                   |



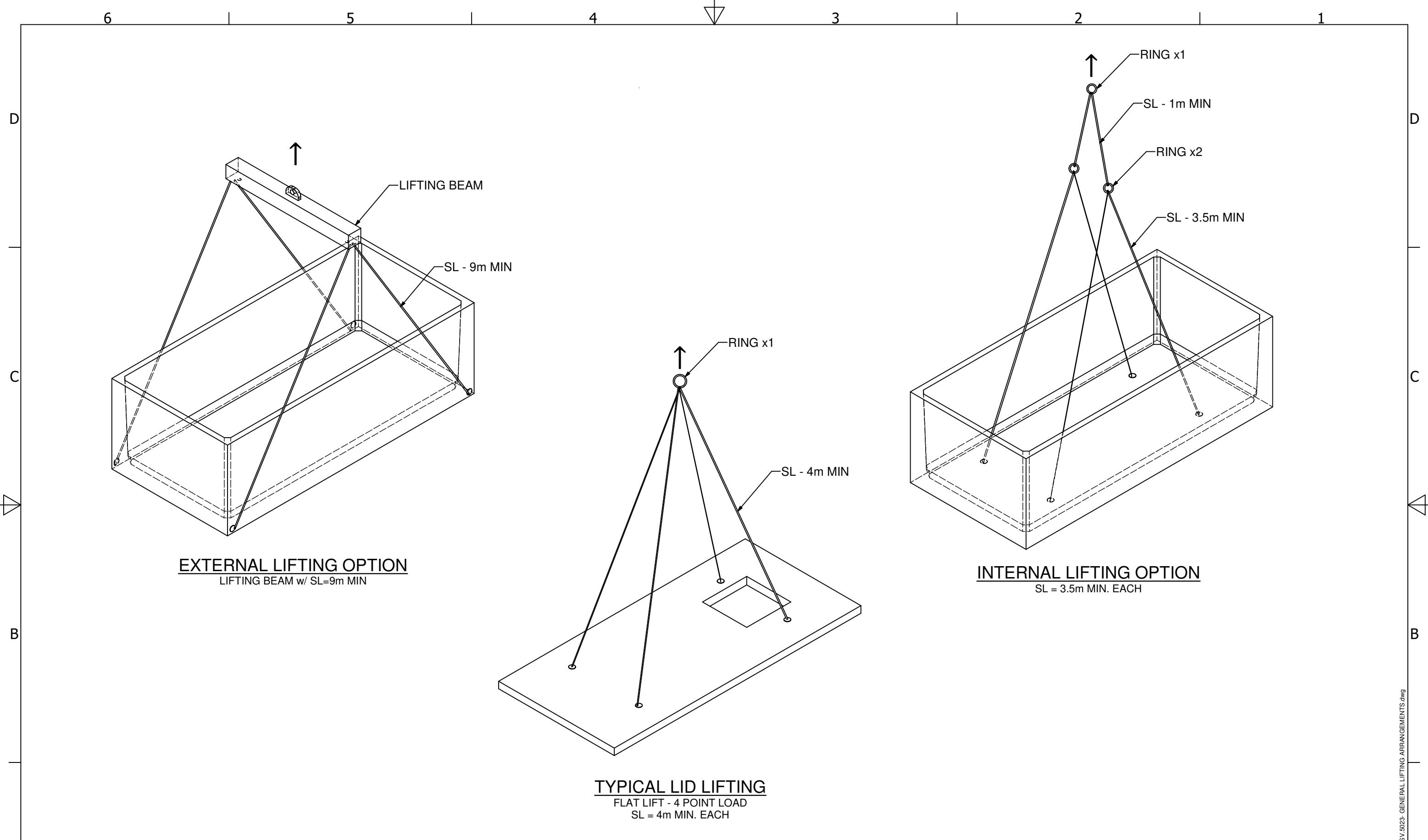
|   |            |                           |          |
|---|------------|---------------------------|----------|
| PROJECT :   |            |                           |          |
| TITLE<br>PERMISSIBLE PENETRATIONS<br>11.11 kL SPEL PRECAST CONCRETE TANK<br>SV.5023-1100- CUSTOM TANK |            |                           |          |
| SCALE<br>N.T.S  | SIZE<br>A3 | SHEET<br>3                | REV<br>1 |
| CUSTOMER CODE :   |            | DWG No.<br>SP21-CT24840-C |          |



STANDARD LID FORMATIONS  
FOR ADDITIONAL ACCESS OPENING AND POSITIONING OPTIONS  
CONTACT SPEL

|   |  |                         |      |  |  |              |                   |  |  |  |  |  |  |  |  |
|---|--|-------------------------|------|--|--|--------------|-------------------|--|--|--|--|--|--|--|--|
| <div>1</div> <div>08/04/21</div> <div>G.T</div> <div>INITIAL RELEASE</div> <div>REV</div> <div>DATE</div> <div>BY</div> <div>DESCRIPTION</div> <div>CHK</div> |  |                         |      |  | <p>CONFIDENTIAL - The drawings must not be disclosed to any third parties without written permission from SPEL STORMWATER .<br/>Unauthorised disclosure may result in prosecution.<br/>© SPEL STORMWATER - This drawing is the property of SPEL STORMWATER ABN: 83 151 832 629 and is subject to return on demand. It is submitted for the use only in connection with the proposal and contracts of SPEL STORMWATER with the expressed conditions that it is not to be reproduced or copied in any form. This data must only be used in accordance with our standard terms and conditions.<br/>© Copyright<br/>SPEL STORMWATER accepts no responsibility for any loss or damage resulting from any person acting on this information. The details and dimensions contained in this document may change, please check with SPEL STORMWATER for confirmation of current specifications.</p> | Drawn<br>G.T | Date<br>9/04/2021 | <div><br/>spelstormwater<br/>joy in water<br/>spel.com.au</div> |  |  |  | PROJECT :  |  |  |  |
|   |  |                         |      |  |  | Check        | Date              |  |  |  |  | TITLE<br>TANK LID PENETRATION OPTIONS<br>SPEL PRECAST CONCRETE TANK<br>SV.5023 |  |  |  |
|   |  | Verified                | Date |  |  |              |                   | SCALE<br>N.T.S   |  |  |  |  |  |  |  |
|   |  | Approved                | Date |  |  |              |                   | SIZE<br>A3   |  |  |  |  |  |  |  |
|   |  | Request No.<br>RN211680 |      |  |  |              |                   | SHEET<br>1   |  |  |  |  |  |  |  |
|   |  |                         |      |  |  |              |                   | REV<br>1   |  |  |  |  |  |  |  |
|   |  |                         |      |  |  |              |                   | CUSTOMER CODE :<br>DWG No.   |  |  |  |  |  |  |  |
|   |  |                         |      |  |  |              |                   | SP21-CT24850-C   |  |  |  |  |  |  |  |


SV.5023-STD LID TYPES.dwg



**EXTERNAL LIFTING OPTION**  
LIFTING BEAM w/ SL=9m MIN

**TYPICAL LID LIFTING**  
FLAT LIFT - 4 POINT LOAD  
SL = 4m MIN. EACH

**INTERNAL LIFTING OPTION**  
SL = 3.5m MIN. EACH

|   |       |   |               |  |         |  |             |                   |  |  |  |  |  |
|---|-------|---|---------------|--|---------|--|-------------|-------------------|--|--|--|--|--|
| <div>11/21</div> <div>GT</div> <div>INITIAL ISSUE</div> |       |   |               |  | CLIENT: | <p>CONFIDENTIAL - The drawings must not be disclosed to any third parties without written permission from SPEL STORMWATER .<br/>Unauthorised disclosure may result in prosecution.<br/>© SPEL STORMWATER - This drawing is the property of SPEL STORMWATER ABN: 83 151 832 629 and is subject to return on demand. It is submitted for the use only in connection with the proposal and contracts of SPEL STORMWATER with the expressed conditions that it is not to be reproduced or copied in any form. This data must only be used in accordance with our standard terms and conditions.<br/>© Copyright<br/>SPEL STORMWATER accepts no responsibility for any loss or damage resulting from any person acting on this information. The details and dimensions contained in this document may change, please check with SPEL STORMWATER for confirmation of current specifications.</p> | Drawn<br>GT | Date<br>9/11/2021 | <div><br/><b>spelstormwater</b><br/>joy in water<br/><a href="http://spel.com.au">spel.com.au</a></div> | <b>PROJECT :</b>   |  |  |  |
|   |       |   |               |  |         |  | Check       | Date              |  | <b>TITLE</b><br>GENERAL LIFTING ARRANGEMENT<br>SPEL PRECAST CONCRETE TANK<br>SV.5023 |  |  |  |
| Verified  | Date  | SCALE N.T.S. SIZE A3 SHEET 1 REV 1            |               |  |         |  |             |                   |  |  |  |  |  |
| Approved  | Date  | CUSTOMER CODE : DWG No. <b>SP21-CT48180-C</b> |               |  |         |  |             |                   |  |  |  |  |  |
| Request No.   |       |   |               |  |         |  |             |                   |  |  |  |  |  |
| 1   | 11/21 | GT  | INITIAL ISSUE |  |         |  |             |                   |  |  |  |  |  |
| REV   | DATE  | BY  | DESCRIPTION   |  | CHK     |  |             |                   |  |  |  |  |  |